

Go to [www.vtechphones.com](http://www.vtechphones.com) to register your product for enhanced warranty support and latest VTech product news.

LS6181  
LS6181-13  
LS6181-15  
LS6181-16  
LS6181-17

DECT 6.0 cordless telephone with  
BLUETOOTH® wireless technology



# vtech®

## Abridged user's manual

### Congratulations

on purchasing your new VTech product. Before using this telephone, please read **Important safety instructions**.

This abridged user's manual provides you with basic installation and use instructions. A limited set of features are described in abbreviated form.

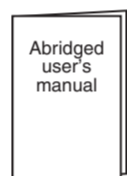
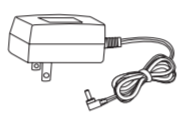
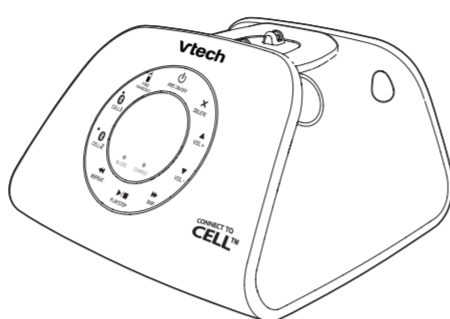
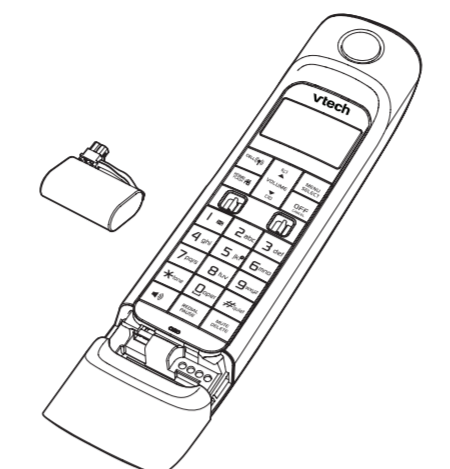
Please refer to the online user's manual for a full set of installation and operation instructions at [www.vtechphones.com](http://www.vtechphones.com).



Telephones identified with this logo have reduced noise and interference when used with most T-coil equipped hearing aids and cochlear implants. The TIA-1083 Compliant Logo is a trademark of the Telecommunications Industry Association. Used under license.

### Parts checklist

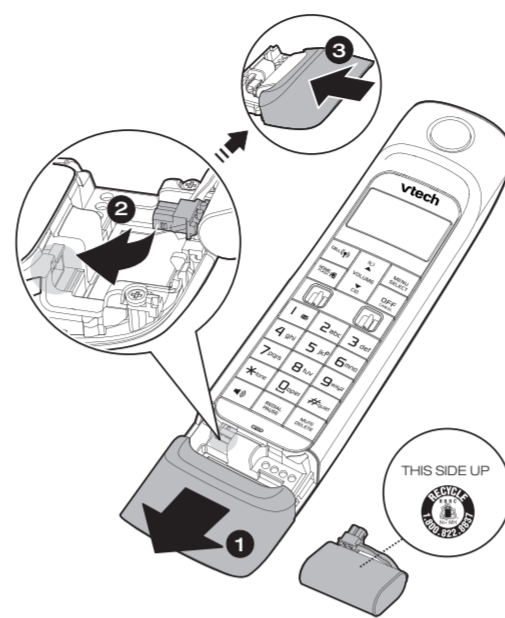
Your telephone package contains the following items. Save your sales receipt and original packaging in the event warranty service is necessary.



### Install the battery

Install the battery as shown below.

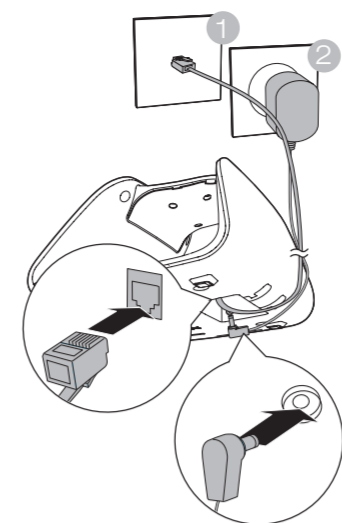
- note**
- Use only the supplied battery.
  - If the handset will not be used for a long time, disconnect and remove the battery to prevent possible leakage.
  - To purchase a replacement battery, visit our website at [www.vtechphones.com](http://www.vtechphones.com) or call 1 (800) 595-9511. In Canada, go to [www.vtechcanada.com](http://www.vtechcanada.com) or call 1 (800) 267-7377.



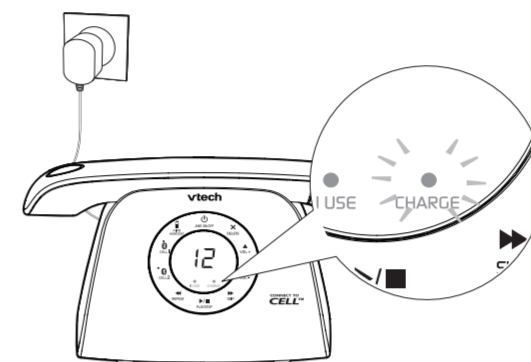
### Connect and charge the battery

- note**
- Use only the adaptor provided.
  - Charge the supplied battery only in accordance with the instructions and limitations specified in this manual.
  - Even if you do not subscribe to any conventional telephone service, you can pair a Bluetooth enabled cell phone to your telephone base (see **Bluetooth**), and use the cell line alone without plugging in a telephone line cord.
  - If you subscribe to digital subscriber line (DSL) high-speed Internet service through your telephone line, make sure you install a DSL filter (not included) between the telephone line cord and telephone wall jack. Contact your DSL service provider for more information.

### Connect the telephone base



### Charge the battery

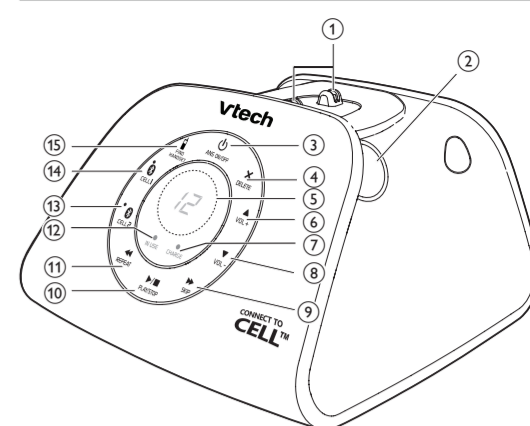


Once you have installed the battery, the handset LCD display indicates the battery status (see the table below).

- note**
- For best performance, keep the handset in the telephone base or charger when not in use.
  - The battery is fully charged after 11 hours of continuous charging.

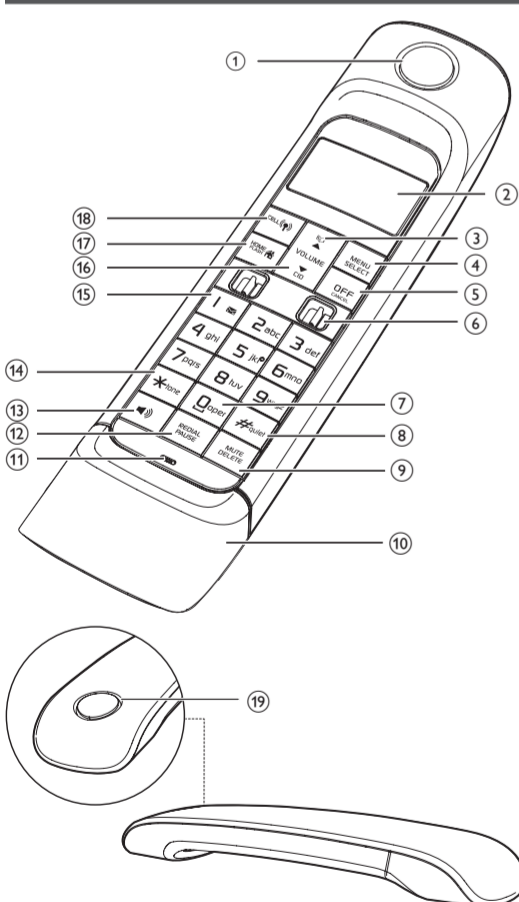
Battery indicators	Battery status	Action
The screen is blank or displays <b>Put in charger</b> and ( ) flashes.	The battery has no or very little charge. The handset cannot be used.	Charge without interruption (at least 30 minutes).

### Telephone base overview



- Charging pole
- Telephone base speakerphone
- ANS ON/OFF
  - Turn on or off the answering system.
- X/DELETE
  - Delete the playing message.
  - Press twice to delete all old messages.
- Message window
- ▲/VOL+
  - Increase the listening volume.
  - Increase the telephone base ringer volume.
- CHARGE light
- ▼/VOL-
  - Decrease the listening volume.
  - Decrease the telephone base ringer volume.
- ▶/SKIP
  - Skip to the next message.
- ▶/PLAY/STOP
  - Play messages.
  - Stop playing messages.
- ◀/REPEAT
  - Repeat a message.
  - Press twice to play the previous message.
- IN USE light
- CELL2
  - Pair or replace cell phone to slot 2.
- CELL1
  - Pair or replace cell phone to slot 1.
- ▶/FIND HANDSET
  - Page all system handsets.

### Handset overview



- Handset earpiece
- LCD display
- VOLUME
  - Review the directory when the phone is not in use.
  - Scroll up while in a menu, or in the directory, caller ID log or redial list.
  - Move the cursor to the right when entering numbers or names.
  - Increase the listening volume during a call or message playback.
- MENU/SELECT
  - Show the menu.
  - While in a menu, press to select an item or save an entry or setting.
- OFF/CANCEL
  - Hang up a call.
  - Return to the previous menu or idle mode without making changes.
  - Delete digits while predialing.

- Silence the handset ringer temporarily while the phone is ringing.
  - Erase the missed call indicator while the handset is not in use.
- Charging pole
  - 0/oper
    - Enter space character during text editing.
  - #quiet
    - Show other dialing options when reviewing a caller ID log entry.
    - Set and turn on the quiet mode, or turn it off.
  - MUTE/DELETE
    - Mute the microphone during a call.
    - Silence the handset ringer temporarily while the phone is ringing.
    - Delete the displayed entry while reviewing the directory, caller ID log or redial list.
    - Delete digits while predialing.
  - Battery compartment cover
  - Microphone
    - Review the redial list.
    - Insert a dialing pause.
  - Mute
    - Make a home call using the handset speakerphone.
    - Answer a call using the handset speakerphone.
    - Switch between the speakerphone and the handset earpiece.
  - Tone
    - Switch to tone dialing temporarily during a call.
  - 1
    - Press repeatedly to add or remove 1 in front of the caller ID log entry before dialing or saving it to the directory.
    - Set or dial your voicemail number.
  - CID/VOLUME
    - Review the caller ID log when the phone is not in use.
    - Scroll down while in a menu, or in the directory, caller ID log or redial list.
    - Move the cursor to the left when entering numbers or names.
    - Decrease the listening volume during a call or message playback.
  - HOME FLASH
    - Make or answer a home call.
    - Answer an incoming home call when you hear a call waiting alert.
  - cell
    - Make or answer a cell call.
    - Answer an incoming cell call when you hear a call waiting alert.
  - Handset speakerphone

### Display icons overview

	The battery icon flashes when the battery is low and needs charging.
	The battery icon animates when the battery is charging.
	The battery icon becomes solid when the battery is fully charged.
ECO	The ECO mode activates automatically to reduce power consumption when the handset is within range from the telephone base.
	There are new voicemail received from your telephone service provider.
	<ul style="list-style-type: none"> <li>On when the home line is in use or there is an incoming home call.</li> <li>Flashes when there is an incoming home waiting call.</li> </ul>
	There are Bluetooth devices connected on the cell devices list.
	<ul style="list-style-type: none"> <li>On when the cell line is in use or there is an incoming cell call.</li> <li>Flashes when there is an incoming cell waiting call.</li> </ul>
NEW	There are new caller ID log entries.
ANS ON	The answering system is turned on.
	The handset ringer is off.
	The message number currently playing and total number of new/old messages recorded.

### Bluetooth

To use a Bluetooth enabled cell phone with your LS6181, pair and connect your Bluetooth cell phone(s) with the telephone base. All LS6181 handsets can make or answer calls on the cell line.



Bluetooth wireless technology operates within a short range (a maximum of approximately 30 feet). When you pair a Bluetooth cell phone to the telephone base, make sure your Bluetooth cell phone is close to the telephone base to maintain sufficient signal strength.

- note** For optimal performance, keep your cell phone within 15 feet of the telephone base while using the cell line.

### Pair and connect your Bluetooth enabled cell phone

- Choose a slot to pair the cell phone. Press and hold CELL1 (or CELL2) on the telephone base for about four seconds until you hear two beeps. The CELL1 light (or CELL2 light) flashes.
  - Your cell phone may prompt you to enter the PIN of the telephone base. The default PIN of the telephone base is 0000.
  - All cell phones that are connected to the telephone base are disconnected temporarily until the pairing process is completed.
- Turn on the Bluetooth feature of your cell phone. Once your cell phone finds your VTech phone (Vtech LS6181), press the appropriate key on your cell phone to continue the pairing process.
  - Your cell phone may prompt you to enter the PIN of the telephone base. The default PIN of the telephone base is 0000.
  - All cell phones that are connected to the telephone base are disconnected temporarily until the pairing process is completed.

When the cell phone is connected to the telephone base, you hear two beeps. The CELL1 light (or CELL2 light) on the telephone base turns on, and the status icon (or ) displays on the handset.

- note** The pairing process may take up to one minute. If the pairing process fails, repeat steps 1 and 2.

### Download contacts from your Bluetooth cell phone

- Press MENU on the handset when the phone is not in use.
- Scroll to Bluetooth then press SELECT.
- Scroll to Download dir then press SELECT.
- Scroll to select the desired cell phone, then press SELECT.

- note**
- For certain cell phones, you may need to press a key on your cell phone to confirm the directory download.
  - Certain cell phones do not support SIM card download. If this is the case, transfer the contacts from your SIM card to your cell phone memory first. Then download from your cell phone memory. For more information on how to transfer contacts from your SIM card to your cell phone memory, see the user's manual of your cell phone.
  - For Android and Blackberry cell phones, you may also download your cell phone directory to your LS6181 via the VTech Contact Share application. Go to [www.vtechphones.com/apps/contact\\_share](http://www.vtechphones.com/apps/contact_share) for application download.



### Using the handset menu

- Press MENU when the phone is not in use.
  - Press ▼ or ▲ until the screen displays the desired feature menu.
  - Press SELECT.
- To return to the previous menu, press CANCEL.
  - To return to idle mode, press and hold CANCEL.

### Telephone settings

Default settings are indicated by asterisks (\*).

Settings menu	Description	Options
LCD language	Set the handset display language.	English* Français Español
Voicemail #	Set the voicemail number for speed dialing.	Voicemail #
Clr voicemail	Turn off the voicemail indicators (see the note below).	Reset VM Icon?
Key tone	Set whether the handset beeps whenever a key is pressed.	Key tone:On* Key tone:Off
Home area code	Set the home area code so that the caller ID log stores only seven digits for local telephone numbers.	Home area code ---
Dial mode	Set the telephone to be touch-tone or pulse dialing.	Touch-tone* Pulse

- note** Use the Ctr voicemail feature when the telephone indicates there is new voicemail but there is none. For example, when you have accessed your voicemail messages while away from home. The Ctr voicemail feature only turns off the indicators; it does not delete your voicemail messages. As long as you have new voicemail messages, your telephone service provider continues to send the signal that turns on the indicators.

The following are some of the telephone features you may wish to set. Refer to Telephone settings in the online Complete user's manual for complete instructions on setting all telephone features.

### Handset ringer volume

You can adjust the handset ringer volume level, or turn the ringer off.

- Press MENU when the handset is not in use.
- Scroll to Ringers and then press SELECT.
- Scroll to choose Home volume or Cell volume, then press SELECT.
- Press ▼ or ▲ to sample each volume level, then press SELECT to save.

- note** When the ringer volume is set to Off, the handset still rings when you press FIND/HANDSET at the telephone base.

### Telephone base ringer volume

Press ▲/VOL+ or ▼/VOL- on the telephone base to adjust the ringer volume when the telephone base is not in use.

When you set the ringer volume to zero, the base ringer is off. The telephone base announces, "Base ringer is off."

### Ringer tone

You can choose from different ringer tones for each handset.

- Press MENU when the handset is not in use.
- Scroll to Ringers and then press SELECT.
- Scroll to choose Home ringtone or Cell ringtone, then press SELECT.
- Press ▼ or ▲ to sample each ringer tone, then press SELECT to save.

- note** If you turn off the ringer volume, you will not hear ringer tone samples.

### Auto answer

When the auto answer feature turns on, the handset answers a call automatically whenever you pick it from the telephone base or a charger when there is an incoming call.

- Press MENU on the handset.
- Use the dialing keys to enter 5463#.
- Press SELECT to select Auto Answer.
- Press ▼ or ▲ to choose Answer:Off or Answer:On.
- Press SELECT to save your selection. The handset returns to idle mode.

### Quiet mode

You can turn on the quiet mode for a period of time. During this period, all tones (except paging tone) are muted. When you turn on the quiet mode, the answering system turns on automatically.

The screen displays <b>Low battery</b> and ( ) flashes.	The battery has enough charge to be used for a short time.	Charge without interruption (about 30 minutes).
The screen displays <b>HANDSET X</b> .	The battery is charged.	To keep the battery charged, place it in the telephone base or charger when not in use.

### Before use

Check for a dial tone by pressing HOME FLASH. If you hear a dial tone, the installation is successful.

### If you do not hear a dial tone:

- Make sure the installation procedures described above are properly done.
- It may be a wiring problem. If you have changed your telephone service to digital service from a cable company or a VoIP service provider, the telephone line may need to be rewired to allow all existing telephone jacks to work. Contact your cable/VoIP service provider for more information.

### Operating range

This cordless telephone operates with the maximum power allowed by the Federal Communications Commission (FCC). Even so, this handset and telephone base can communicate over only a certain distance - which can vary with the locations of the telephone base and handset, the weather, and the layout of your home or office.

When the handset is out of range, the handset displays **Out of range** or **no pwr at base**.

If there is a call while the handset is out of range, it may not ring, or if it does ring, the call may not connect well when you press HOME FLASH or CALL. Move closer to the telephone base, then press HOME FLASH or CALL to answer the call.

If the handset moves out of range during a telephone conversation, there may be interference. To improve reception, move closer to the telephone base.

- Press and hold #quiet when the handset is not in use.
- Use the dialing keys (0-9) to enter the duration (hour), then press SELECT to save.
- To turn off the quiet mode, press and hold #quiet on the handset when the phone is not in use.

### Set date and time

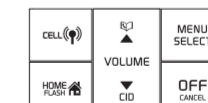
If you subscribe to caller ID service, the day, month and time are set automatically with each incoming call. You can also set the date and time manually.

- Press MENU on the handset when not in use.
- Scroll to Set date/time and then press SELECT.
- Use the dialing keys (0-9) to enter the month (MM), date (DD) and year (YY). Then press SELECT.
- Use the dialing keys (0-9) to enter the hour (HH) and minute (MM). Then press ▼ or ▲ to choose AM or PM.
- Press SELECT.

### Telephone operation

#### Make a home call

- Press HOME FLASH or CALL, and then dial the telephone number.



#### Make a cell call

- Press cell. Scroll to select the desired cell phone when necessary, then press SELECT.
- Enter the telephone number and then press cell to dial.



- note** While using the cell line, place your cell phone closer to the telephone base, and make sure that there are no physical obstacles between the telephone base and the cell phone, such as large furniture or thick walls.

#### Answer a home/cell call

- Press HOME FLASH, cell, or any dialing key.

#### -OR-

- Pick up the handset from the telephone base when the auto answer feature is turned on.

#### End a home/cell call:

- Press OFF or put the handset back in the telephone base.

### Handset speakerphone

- During a call, press MUTE to switch between the handset speakerphone and the handset earpiece.

### Volume

- During a call, press ▲/VOLUME or ▼/VOLUME.

### Mute

The mute function allows you to hear the other party but the other party cannot hear you.

- During a call, press MUTE. The handset displays Muted.
- Press MUTE again to resume the conversation. The handset displays Microphone on briefly.

### Call waiting

When you subscribe to call waiting service from your telephone service provider, you hear an alert tone if there is an incoming call while you are already on a call.

### Call waiting on the home line:

- Press FLASH to put the current call on hold and take the new call.
- Press FLASH at any time to switch back and forth between calls.

### Call waiting on the cell line:

- Press cell to put the current call on hold and take the new call.
- Press cell at any time to switch back and forth between calls.

### Temporary ringer silencing

When the telephone is ringing, you can temporarily silence the telephone base/handset ringer without disconnecting the call. The next call rings normally at the preset volume.

### To silence the handset ringer:

- Press OFF or MUTE on the handset. MUTE displays and Ringer muted displays briefly.

### To silence the telephone base ringer:

- Press ▼/VOL- on the telephone base.

### Temporary tone dialing

If you have pulse (rotary) service only, you can switch from pulse to touch-tone dialing temporarily during a call.

- During a call, press \*tone on the handset.
- Use the dialing keys to enter the relevant number. The telephone sends touch-tone signals. It automatically returns to pulse dialing mode after you end the call.

