

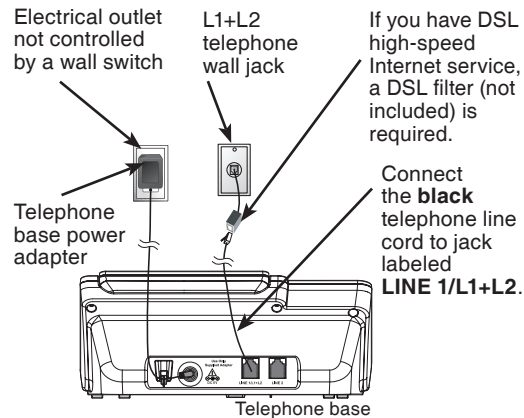
# Quick start guide

for model DS6151

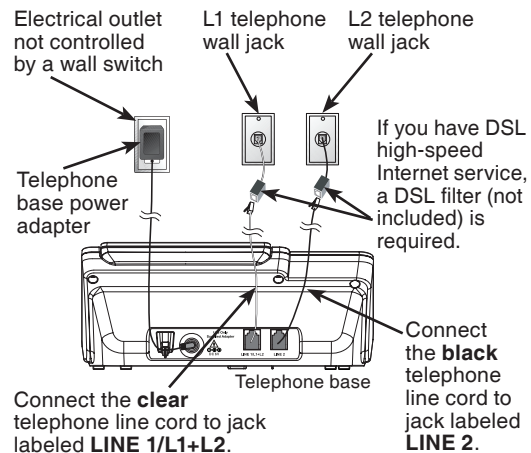
## Install the telephone base

Follow the figures below to install the telephone base as shown below:

**Figure One: Installation with 2-line jack**



**Figure Two: Installation with separate line jacks**

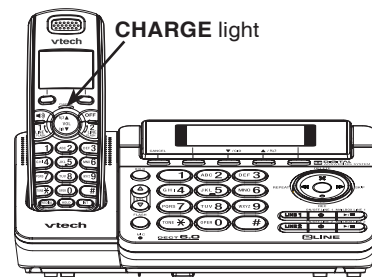
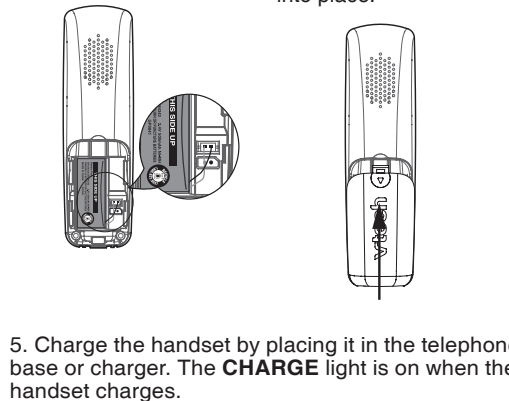
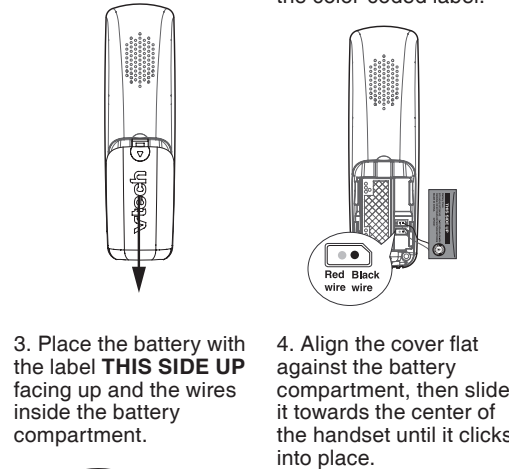


- note**
- Use only the power adapter and battery supplied with this VTech telephone.
  - For complete feature instructions, please refer to your user's manual.

## Battery installation and charging

Install the battery as shown below. After installing the battery, you might be able to make and receive short calls. For best performance, charge the handset battery for at least 16 hours before use.

- If the battery compartment cover is on the handset, press the indentation and slide the cover to remove.
- Plug the battery connector securely into the socket inside the handset battery compartment, matching the color-coded label.



## Make, answer and end a call

### Using the handset:

#### Make a call

- Press **LINE 1**, **LINE 2**, or **CALL**.
- Enter the telephone number.

#### Redial a call

- Enter the telephone number.
- Press **LINE 1**, **LINE 2**, or **CALL**.

#### Answer a call

Press **LINE 1** or **LINE 2** to answer.

#### End a call

Press **OFF** or return the handset to the telephone base to hang up.

### Using the telephone base:

#### Make a call

- Press **LINE 1** or **LINE 2**.
- Enter the telephone number.

#### Redial a call

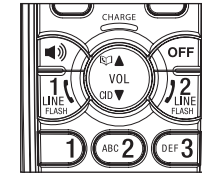
- Enter the telephone number.
- Press **LINE 1** or **LINE 2**.

#### Answer a call

Press **LINE 1** or **LINE 2** to answer.

#### End a call

Press **LINE 1** or **LINE 2**.

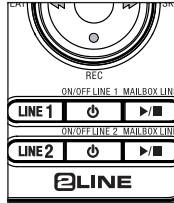


## Turn the answering system on or off

You must turn on the answering system for answering and recording messages.

### To turn on or off with the telephone base:

- Press **ON/OFF LINE 1** and/or **ON/OFF LINE 2** to turn on the corresponding answering system. The telephone base announces and shows, "Calls will be answered." The **ON/OFF LINE 1** light and/or **ON/OFF LINE 2** light will be on respectively.



- Press **ON/OFF LINE 1** and/or **ON/OFF LINE 2** to turn off the corresponding answering system. The telephone base announces and shows, "Calls will not be answered." The **ON/OFF LINE 1** light and/or **ON/OFF LINE 2** light will be off respectively.

### To turn on or off with a handset:

- Press the **MENU** softkey when the handset is not in use.
- Press the **SELECT** softkey to select **ANSWERING SYS.**
- Press **▲** or **▼** to select **Mailbox 1** or **Mailbox 2**, then press the **SELECT** softkey. The corresponding icon, **OO1** or **OO2**, flashes on the screen.
- Press **▲** or **▼** to select **Ans sys setup**, then press the **SELECT** softkey.
- Press **▲** or **▼** to select **Answer ON/OFF**, then press the **SELECT** softkey.
- Press **▲** or **▼** to select **On** or **Off**, then press the **SET** softkey to confirm your setting or press the **BACK** softkey to exit to the previous menu without making any changes.
- The screen displays **Ans1 ON1** or **Ans2 ON2** when the answering system of line 1 or line 2 is turned on respectively. The screen displays **Ans1 OFF1** or **Ans2 OFF2** when the answering systems of both lines 1 and 2 are turned on.

## Outgoing announcement

The telephone is preset with a greeting that answers calls with *“Hello, please leave a message after the tone.”* You may use this preset announcement, or replace it with your own.

## Use the telephone base to record your own announcement:

1. Press **●/REC** while the telephone base is not in use.
2. Press **▼/CID** or **▲/DIR** to select **Announcement**, then press the **SELECT** softkey.
3. Press **▼/CID** or **▲/DIR** to select **Mailbox 1** or **Mailbox 2**, then press the **SELECT** softkey. The corresponding icon, **1QO** or **QO2**, flashes on the screen.
4. The telephone base announces, *“Record after the tone. Press 5 when you are done.”* After the tone, speak towards **MIC** (microphone) of the telephone base. Press **5** or the **STOP** softkey when finished recording.
5. The answering system automatically plays back the newly recorded announcement. Press **5** to stop the playback at any time.

## Use a handset to record your own announcement:

1. Press the **MENU** softkey menu when the handset is not in use.
2. Press the **SELECT** softkey to select **ANSWERING SYS**.
3. Press **▲** or **▼** to select **Mailbox 1** or **Mailbox 2**, then press the **SELECT** softkey. The corresponding icon, **QO1** or **QO2**, flashes on the screen.
4. Press **▲** or **▼** to select **Ans sys setup**, then press the **SELECT** softkey.
5. Press **▲** or **▼** to select **Announcement**, then press the **SELECT** softkey.
6. The handset announces, *“To play, press 2. To record, press 7.”* Press **7** to record and the screen shows **Recording announcement...**, or press the **BACK** softkey to exit to the previous menu.
7. The handset announces, *“Record after the tone. Press 5 when you are done.”* After the tone, speak towards the microphone of the handset.
8. Press **5** or the **STOP** softkey when finished recording.
9. The answering system automatically plays back the newly recorded announcement. Press **5** to stop the playback at any time; **2** to replay the recorded announcement; or **7** to record again if desired.
10. Press the **BACK** softkey to exit to the previous menu.

## To play messages with the telephone base:

Press **▶/■/MAILBOX LINE 1** for line 1 or **▶/■/MAILBOX LINE 2** for line 2 to listen to messages.

Options during playback:

- Press **▼/VOL/▲** to adjust the speaker volume.
- Press **▶/SKIP** to skip to the next message.
- Press **◀/REPEAT** to repeat the message currently playing. Press **◀/REPEAT** twice to listen to the previous message.
- Press **X/DELETE** to delete the current message. The system advances to the next message.
- Press **▶/■/MAILBOX LINE 1** for line 1 or **▶/■/MAILBOX LINE 2** for line 2 to stop listening to messages.
- Press **CANCEL** to exit to the previous menu.

## To play messages with a handset:

1. Press the **MENU** softkey when the handset is not in use.
2. Press the **SELECT** softkey to select **ANSWERING SYS**.
3. Press **▲** or **▼** to select **Mailbox 1** or **Mailbox 2**. Press the **SELECT** softkey.
4. Press **▲** or **▼** to select **Play messages**, then press the **SELECT** softkey.

Options during playback:

- Press **▼/VOL/▲** to adjust the speaker volume.
- Press **6** to skip to the next message.
- Press **4** to repeat the message currently playing. Press **4** twice to listen to the previous message.
- Press **3** to delete the current message. The system advances to the next message.
- Press **5** to stop.
- Press the **BACK** softkey to exit to the previous menu.

## IMPORTANT!

If your product is not working properly:

- Refer to the **Troubleshooting** section of the user's manual.
- Visit our website at [www.vtechphones.com](http://www.vtechphones.com) or call 1 (800) 595-9511. In Canada, go to [www.vtechcananda.com](http://www.vtechcananda.com) or dial 1 (800) 267-7377.