



# DS6751/DS6751-2/DS6751-3/DS6752-4

Go to [www.vtechphones.com](http://www.vtechphones.com) to register your product for enhanced warranty support and latest VTech product news.



## Abridged user's manual

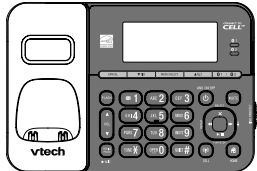




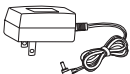
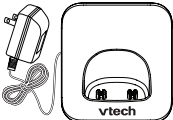
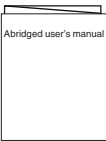

### Introduction

To protect our environment and conserve natural resources, this **Abridged user's manual** provides you with basic installation and use instructions. A limited set of features are described in abbreviated form.

Please refer to the online **User's manual** for a full set of installation and operation instructions at [www.vtechphones.com](http://www.vtechphones.com).

Before using this VTech product, please read **Important safety instructions** on page 2 of this user's manual.

### Inside your package

-  Telephone base
-  Handset  
(1 for DS6751)  
(2 for DS6751-2)  
(3 for DS6751-3)  
(4 for DS6752-4)
-  Handset battery compartment cover  
(1 for DS6751)  
(2 for DS6751-2)  
(3 for DS6751-3)  
(4 for DS6752-4)
-  Battery  
(1 for DS6751)  
(2 for DS6751-2)  
(3 for DS6751-3)  
(4 for DS6752-4)
-  Telephone line cord
-  Telephone base power adapter
-  Handset charger and charger adapter  
(1 for DS6751-2)  
(2 for DS6751-3)  
(3 for DS6752-4)
-  Abridged user's manual
-  Quick start guide

Abridged user's manual

Quick start guide



## Important safety instructions

When using your telephone equipment, basic safety precautions should always be followed to reduce the risk of fire, electric shock and injury, including the following:

1. Read and understand all instructions.
2. Follow all warnings and instructions marked on the product.
3. Unplug this product from the wall outlet before cleaning. Do not use liquid or aerosol cleaners. Use a damp cloth for cleaning.
4. Do not use this product near water such as near a bath tub, wash bowl, kitchen sink, laundry tub or swimming pool, or in a wet basement or shower.
5. Do not place this product on an unstable table, shelf, stand or other unstable surfaces.
6. Avoid placing the telephone system in places with extreme temperature, direct sunlight, or other electrical devices. Protect your phone from moisture, dust, corrosive liquids and fumes.
7. Slots and openings in the back or bottom of the telephone base and handset are provided for ventilation. To protect them from overheating, these openings must not be blocked by placing the product on a soft surface such as a bed, sofa or rug. This product should never be placed near or over a radiator or heat register. This product should not be placed in any area where proper ventilation is not provided.
8. This product should be operated only from the type of power source indicated on the marking label. If you are not sure of the type of power supply in your home or office, consult your dealer or local power company.
9. Do not allow anything to rest on the power cord. Do not install this product where the cord may be walked on.
10. Never push objects of any kind into this product through the slots in the telephone base or handset because they may touch dangerous voltage points or create a short circuit. Never spill liquid of any kind on the product.
11. To reduce the risk of electric shock, do not disassemble this product, but take it to an authorized service facility. Opening or removing parts of the telephone base or handset other than specified access doors may expose you to dangerous voltages or other risks. Incorrect reassembling can cause electric shock when the product is subsequently used.
12. Do not overload wall outlets and extension cords.
13. Unplug this product from the wall outlet and refer servicing to an authorized service facility under the following conditions:
  - When the power supply cord or plug is damaged or frayed.
  - If liquid has been spilled onto the product.
  - If the product has been exposed to rain or water.
  - If the product does not operate normally by following the operating instructions. Adjust only those controls that are covered by the operation instructions. Improper adjustment of other controls may result in damage and often requires extensive work by an authorized technician to restore the product to normal operation.
  - If the product has been dropped and the telephone base and/or handset has been damaged.
  - If the product exhibits a distinct change in performance.
14. Avoid using a telephone (other than cordless) during an electrical storm. There is a remote risk of electric shock from lightning.
15. Do not use the telephone to report a gas leak in the vicinity of the leak. Under certain circumstances, a spark may be created when the adapter is plugged into the power outlet, or when the handset is replaced in its cradle. This is a common event associated with the closing of any electrical circuit. The user should not plug the phone into a power outlet, and should not put a charged handset into the cradle, if the phone is located in an environment containing concentrations of flammable or flame-supporting gases, unless there is adequate ventilation. A spark in such an environment could create a fire or explosion. Such environments might include: medical use of oxygen without adequate ventilation; industrial gases (cleaning solvents; gasoline vapors; etc.); a leak of natural gas; etc.
16. Only put the handset of your telephone next to your ear when it is in normal talk mode.
17. The power adapters are intended to be correctly oriented in a vertical or floor mount position. The prongs are not designed to hold the plug in place if it is plugged into a ceiling, under-the-table or cabinet outlet.
18. For pluggable equipment, the socket-outlet shall be installed near the equipment and shall be easily accessible.

## SAVE THESE INSTRUCTIONS

### Battery

- CAUTION: Use Only Supplied Battery.
- Do not dispose of the battery in a fire. Check with local waste management codes for special disposal instructions.
- Do not open or mutilate the battery. Released electrolyte is corrosive and may cause burns or injury to the eyes or skin. The electrolyte may be toxic if swallowed.
- Exercise care in handling batteries in order not to create a short circuit with conductive materials.
- Charge the battery provided with this product only in accordance with the instructions and limitations specified in this manual.

## Precautions for users of implanted cardiac pacemakers

Cardiac pacemakers (applies only to digital cordless telephones):

Wireless Technology Research, LLC (WTR), an independent research entity, led a multidisciplinary evaluation of the interference between portable wireless telephones and implanted cardiac pacemakers. Supported by the U.S. Food and Drug Administration, WTR recommends to physicians that:

### Pacemaker patients

- Should keep wireless telephones at least six inches from the pacemaker.
- Should NOT place wireless telephones directly over the pacemaker, such as in a breast pocket, when it is turned ON.
- Should use the wireless telephone at the ear opposite the pacemaker. WTR's evaluation did not identify any risk to bystanders with pacemakers from other persons using wireless telephones.

## Operating range

This cordless telephone operates with the maximum power allowed by the Federal Communications Commission (FCC). Even so, this handset and telephone base can communicate over only a certain distance - which can vary with the locations of the telephone base and handset, the weather, and the layout of your home or office.

When the handset is out of range, the handset displays **Out of range or no pwr at base**.

If there is a call while the handset is out of range, it may not ring, or if it does ring, the call may not connect well when you press **END/HOME**. Move closer to the telephone base, then press **END/HOME** to answer the call.

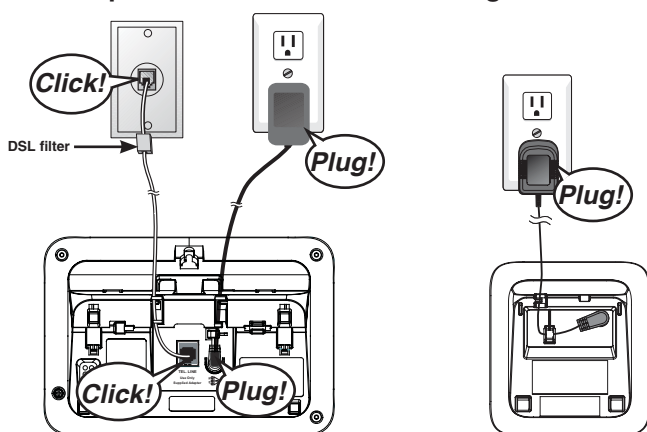
If the handset moves out of range during a telephone conversation, there may be interference. To improve reception, move closer to the telephone base.

## About cordless telephones

- **Privacy:** The same features that make a cordless telephone convenient create some limitations. Telephone calls are transmitted between the telephone base and the cordless handset by radio waves, so there is a possibility that the cordless telephone conversations could be intercepted by radio receiving equipment within range of the cordless handset. For this reason, you should not think of cordless telephone conversations as being as private as those on corded telephones.
- **Electrical power:** The telephone base of this cordless telephone must be connected to a working electrical outlet. The electrical outlet should not be controlled by a wall switch. Calls cannot be made from the cordless handset if the telephone base is unplugged, switched off or if the electrical power is interrupted.
- **Potential TV interference:** Some cordless telephones operate at frequencies that may cause interference to televisions and VCRs. To minimize or prevent such interference, do not place the telephone base of the cordless telephone near or on top of a TV or VCR. If interference is experienced, moving the cordless telephone farther away from the TV or VCR often reduces or eliminates the interference.
- **Rechargeable batteries:** Exercise care in handling batteries in order not to create a short circuit with conducting material such as rings, bracelets and keys. The battery or conductor may overheat and cause harm. Observe proper polarity between the battery and the battery charger.
- **Nickel-metal hydride rechargeable batteries:** Dispose of these batteries in a safe manner. Do not burn or puncture the battery. Like other batteries of this type, if burned or punctured, they could release caustic material which could cause injury.

## Get started

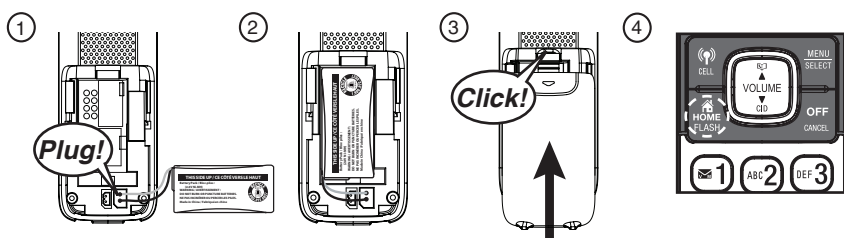
### Connect the telephone base and handset charger



#### note

- Use only the power adapters and batteries supplied with this product. To order replacements, visit our website at [www.vtechphones.com](http://www.vtechphones.com) or call 1 (800) 595-9511. In Canada, go to [www.vtechcanada.com](http://www.vtechcanada.com) or call 1 (800) 267-7377.
- Even if you do not subscribe to any conventional telephone service, you can still use the cell line alone without plugging in a telephone line cord.
- If you subscribe to telephone service from a cable company or a VoIP service provider, contact your cable/VoIP service provider for more information.

### Install battery



#### IMPORTANT:

Press **HOME** to check for a dial tone. If you hear a dial tone, the installation is successful.

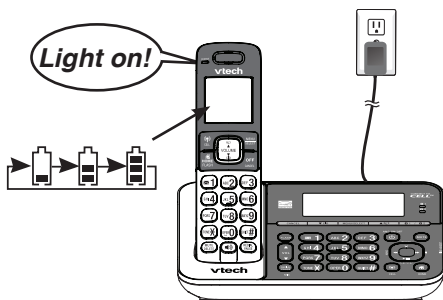
#### If you do not hear a dial tone:

- Make sure the installation procedures described above are properly done.
- It may be a wiring problem. If you have changed your telephone service to digital service from a cable company or a VoIP service provider, the telephone line may need to be rewired to allow all existing telephone jacks to work. Contact your cable/VoIP service provider for more information.

### Charge your phone

#### The battery icon

- Animates when the battery is charging.
- Flashes when the battery is low and needs charging.
- Becomes solid when the battery is fully charged.



**Charge for at least 30 minutes before initial settings.**

**Charge for 11 hours before initial use.**

### Configure your phone

#### Set date and time

1. Press **MENU** when the telephone base/handset is not in use.
2. Scroll to **Set date/time**, then press **SELECT**.
3. Enter the month (**MM**), date (**DD**) and year (**YY**), then press **SELECT**.
4. Enter the hour (**HH**) and minute (**MM**). Then scroll to **AM** or **PM**.
5. Press **SELECT**.

#### note

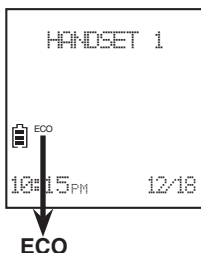
If you subscribe to caller ID service, the day, month and time are set automatically with each incoming call.

## ECO mode

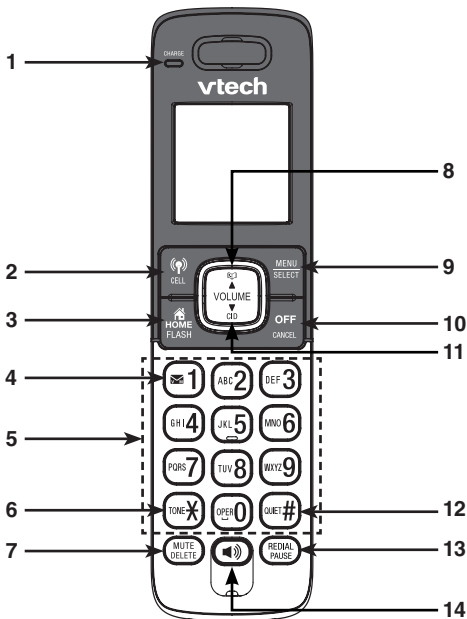
This power conserving technology reduces power consumption for optimal battery performance.

The ECO mode activates automatically whenever the handset is synchronized with the telephone base.

The handset shows **ECO** when the ECO mode activates.



## Handset overview



### 1 – CHARGE light

### 2 – CELL

- Make or answer a cell call.
- Answer a call waiting cell call.

### 3 – HOME/FLASH

- Make or answer a home call.
- Answer a call waiting home call.

### 4 – Voicemail icon

- Set or dial your voicemail number.

### 5 – Dialing keys

### 6 – TONE

- Switch to tone dialing temporarily.

### 7 – MUTE/DELETE

- Mute a call.
- Delete a digit or character.
- Silence the ringer temporarily.
- Delete the displayed entry when reviewing the directory, caller ID log or redial list.

### 8 – VOLUME

- Scroll up while in a menu, or in the directory, caller ID log or redial list.
- Increase the listening volume.
- Review the directory.

### 9 – MENU/SELECT

- Show the menu.
- Select an item or save an entry or setting in a menu.

### 10 – OFF/CANCEL

- Hang up a call.
- Silence the ringer temporarily.
- Erase the missed call indicator.
- Return to the previous menu or idle mode without making changes.

### 11 – CID/VOLUME

- Scroll down while in a menu, or in the directory, caller ID log or redial list.
- Decrease the listening volume.
- Review the caller ID log.

### 12 – QUIET#

- Set and turn on the quiet mode, or turn it off.
- Show other dialing options when reviewing a caller ID log entry.

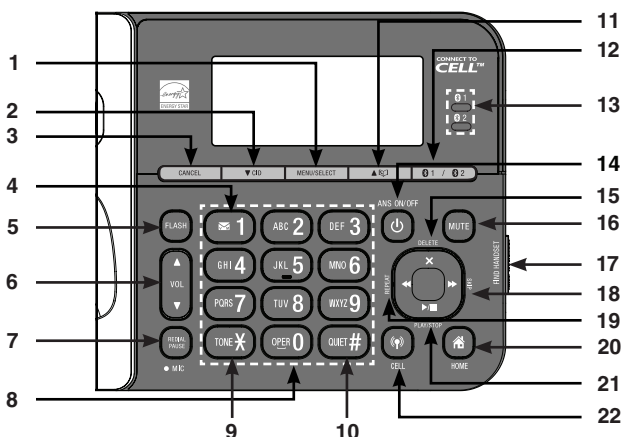
### 13 – REDIAL/PAUSE

- Review the redial list.
- Insert a dialing pause.

### 14 – Speakerphone

- Make a home call or answer a home or cell call.
- Switch between the speakerphone and the handset earpiece.

## Telephone base overview



### 1 – MENU/SELECT

- Show the menu.
- Select an item or save an entry or setting in a menu.

### 2 – ▼/CID

- Scroll down while in a menu, or in the directory, caller ID log or redial list.
- Review the caller ID log.

### 3 – CANCEL

- Silence the ringer temporarily.
- Erase the missed call indicator.
- Return to the previous menu or idle mode without making changes.

### 4 – ✉ 1

- Set or dial your voicemail number.

### 5 – Flash

- Answer a call waiting call.

### 6 – ▲/VOL/▼

- Adjust the listening volume.

### 7 – REDIAL/PAUSE

- Review the redial list.
- Insert a dialing pause.

### 8 – Dialing keys

### 9 – TONE ✕

- Switch to tone dialing temporarily.

### 10 – QUIET#

- Set and turn on the quiet mode, or turn it off.
- Show other dialing options when reviewing a caller ID log entry.

### 11 – ▲/📖

- Scroll up while in a menu, or in the directory, caller ID log or redial list.
- Review the directory.

### 12 – 1 / 2

- Pair or replace a cell phone.
- Cancel the pairing process.

### 13 – 1 / 2 device lights

- On when the telephone base is paired and connected with a Bluetooth cell phone.
- Blinks when the telephone base is pairing and connecting with a Bluetooth cell phone.

### 14 – ANS ON/OFF

- Turn on or off the answering system.

### 15 – X/DELETE

- Delete the playing message.
- Delete a digit or character.
- Delete the displayed entry when reviewing the directory, caller ID log or redial list.

### 16 – MUTE

- Mute a call.
- Silence the ringer temporarily.

### 17 – FIND HANDSET

- Page all system handsets.

### 18 – ►/SKIP

- Skip to the next message.

### 19 – ◀/REPEAT

- Repeat a message.
- Press twice to play the previous message

### 20 – 🏠/HOME

- Make or answer a home call.

### 21 – ▶/PLAY/STOP

- Play messages.
- Stop playing messages.

### 22 – 📶/CELL

- Make or answer a cell call.

## Handset and telephone base display icons

- ..... The battery icon flashes when the battery is low and needs charging.
- ..... The battery icon animates when the battery is charging.
- ..... The battery icon becomes solid when the battery is fully charged.
- ..... The handset/telephone base ringer is turned off.
- ..... There are new voicemail received from the telephone service provider.
- ..... The home line is in use or there is an incoming home call.
- ..... There are Bluetooth connected devices on the cell device list.
- ..... There are Bluetooth connected devices on the cell device list.
- ..... The cell line is in use or there is an incoming cell call.
- ..... The message number currently playing and total number of messages recorded.
- **ANS ON** ..... The answering system is turned on.
- **ECO** ..... The ECO mode activates automatically to reduce power consumption whenever the handset is synchronized with the telephone base.
- **NEW/NEW** ..... The caller ID log entry you are reviewing is new. The message you are listening is new.

## Built-in answering system and voicemail

This telephone has a built-in answering system which can be used without any service subscription.

This telephone also supports voicemail feature which requires subscription from your telephone service provider. Contact your telephone service provider for details.

### OO To configure some common settings for the answering system

#### Record your own announcement

You can use the preset announcement to answer calls, or replace it with your own recorded announcement. The announcement can be up to 90 seconds in length.

1. Press **MENU** when the phone is not in use.
2. Scroll to **Answering sys**, then press **SELECT** twice.
3. The system announces, "To play, press 2. To record, press 7." Then press **7** to record.
4. The system announces, "Record after the tone. Press 5 when you are done." After the tone, speak towards the microphone.
5. Press **5** when done.

#### Set number of rings

You can set the answering system to answer an incoming call after two, three, four, five or six rings; or toll saver. If you choose toll saver, the answering system answers a call after two rings when you have new messages, or after four rings when you have no new messages.

1. Press **MENU** when the phone is not in use.
2. Scroll to **Answering sys**, then press **SELECT**.
3. Scroll to **Ans sys setup**, then press **SELECT**.
4. Scroll to **# of rings**, then press **SELECT**.
5. Scroll to **6, 5, 4, 3, 2** or **Toll saver** and then press **SELECT**.

### VM To configure the voicemail number and retrieve voicemail messages

You can save the voicemail number to **VM 1** on each handset and the telephone base for easy access. Contact your telephone service provider for more information and assistance about using your voicemail service.

#### Set voicemail number:

1. Press **MENU** when the phone is not in use.
2. Scroll to **Settings**, then press **SELECT**.
3. Scroll to **Voicemail #**, then press **SELECT**.
4. Enter the voicemail number.
  - Press **DELETE** to erase a digit.
  - Press and hold **DELETE** to erase all digits.
  - Press **▼** or **▲** to move the cursor to the left or right.
  - Press and hold **PAUSE** to insert a dialing pause (a **P** appears).
  - Press **TONEX** to add **\* (†** appears) or **QUIET#** to add **# (‡** appears).
5. Press **SELECT**.

#### Retrieve voicemail messages:

Press and hold **VM 1**.

## Bluetooth

### Pair and connect your first Bluetooth cell phone

To use a Bluetooth enabled cell phone with your **DS6751**, you must first pair and connect your Bluetooth cell phone(s) with the telephone base. All **DS6751** handsets can be used to make or answer calls on the cell line.



1. Press **1** / **2** on the telephone base. You hear two beeps. The telephone base screen displays **Pairing D1...** and the **1** device light blinks.
2. Turn on the Bluetooth feature of your cell phone. Once your cell phone finds your VTech phone (**VTech DS6751**), press the appropriate key on your cell phone to continue the pairing process.
  - Your cell phone may prompt you to enter the PIN of the telephone base. The default PIN of the telephone base is **0000**.

**note**

- Bluetooth wireless technology operates within a short range (a maximum of approximately 30 feet). When you pair a Bluetooth cell phone to the telephone base, make sure your Bluetooth cell phone is close to the telephone base to maintain sufficient signal strength. For optimal performance, keep your cell phone within 15 feet of the telephone base while using the cell line.
- If the pairing fails, turn off the Bluetooth feature on your cell phone and on the **DS6751/DS6752** by pressing **1** / **2**. Then repeat the steps above to pair and connect again. In some cases, it may take you a few attempts to complete the pairing process.

**VTech Connect to Cell™ application**

This application helps you integrate your Android phones with your **DS6751/DS6752**. For more information and application download, go to [http://www.vtechphones.com/app\\_connect\\_to\\_cell](http://www.vtechphones.com/app_connect_to_cell)

**Download directory**

1. Press **MENU** when the phone is not in use.
2. Scroll to **Bluetooth**, then press **SELECT**.
3. Scroll to **Download dir**, then press **SELECT**.
4. Scroll to select the desired cell phone, then press **SELECT**.
  - For certain cell phones, you may need to press a key on your cell phone to confirm the directory download.

**note**

- The performance of directory download feature depends on the compatibility of your Bluetooth cell phone. Refer to the user's manual of your cell phone for more information about how that device uses Bluetooth connectivity.
- Certain cell phones do not support SIM card download. If this is the case, transfer the contacts from your SIM card to our cell phone memory first. Then, download from your cell phone memory. For more information on how to transfer contacts from your SIM card to your cell phone memory, see the user's manual of your cell phone.
- For Android cell phones, you may also download your cell phone directory to your **DS6751/DS6752** via the VTech Contact Share application. Go to [http://www.vtechphones.com/app\\_contact\\_share](http://www.vtechphones.com/app_contact_share) for application download.

**Telephone settings**

The following are some of the telephone features you may wish to set. Refer to **Telephone settings** in the online **User's manual** for detailed instructions on setting all telephone features.

To access the **Settings** menu, press **MENU** when the phone is not in use. Scroll to **Settings**, and then press **SELECT**. Default settings are indicated by asterisks (\*).

| Settings menu         | Description  | Options  |
|-----------------------|--|--|
| <b>LCD language</b>   | Set the screen display language.   | <b>English*</b> ;<br><b>Français</b> ;<br><b>Español</b> |
| <b>Clr voicemail</b>  | Turn off the voicemail indicators (see the note below).  | <b>Reset VM Icon?</b>                                    |
| <b>Key tone</b>       | Turn an audible beep on or off whenever a key is pressed.  | <b>Key tone:On*</b> ;<br><b>Key tone:Off</b>             |
| <b>Home area code</b> | Set the home area code so that the caller ID log stores only seven digits for local telephone numbers. | <b>Home area code</b><br>---                             |
| <b>Dial mode</b>      | Set the telephone to be touch-tone or pulse dialing.   | <b>Touch-tone*</b> ;<br><b>Pulse</b>                     |

**note**

The **Clr voicemail** feature turns off the indicators, but it does not delete your voicemail messages. After you have listened to all new voicemail messages, the indicators turn off automatically. When you have new voicemail messages, your telephone service provider will send the signal and turn on the indicators.

**Ringer volume**

You can adjust the ringer volume level, or turn the ringer off.

1. Press **MENU** when the telephone base/handset is not in use.
2. Scroll to **Ringers**, then press **SELECT**.
3. Scroll to **Home volume** or **Cell volume**, then press **SELECT**.
4. Scroll to adjust the volume, then press **SELECT**.

**Quiet mode**

You can turn on the quiet mode for a period of time. During this period, all tones (except paging tone) and the call screening are muted. When you turn on the quiet mode, the answering system turns on automatically.

1. Press and hold **QUIET#** when the telephone base/handset is not in use.
  2. Enter the desired duration, then press **SELECT**.
- To turn off the quiet mode, press and hold **QUIET#** when the telephone base/handset is not in use.



## Telephone operations - Calls

### Make a home call with a handset:

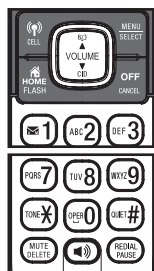
- Press **HOME** or **CALL**, and then dial the telephone number.

### Make a home call at the telephone base:

- Press **HOME**, then dial the telephone number.

### Make a cell call with a handset:

1. Press **CELL**. Scroll to select the desired cell phone when necessary, then press **SELECT**.
2. Enter the telephone number and then press **CELL** to dial.



#### note

While using the cell line, place your cell phone closer to the telephone base, and make sure that there are no physical obstacles between the telephone base and the cell phone, such as large furniture or thick walls.

### Make a cell call at the telephone base:

1. Press **CELL**. Scroll to select the desired cell phone when necessary, then press **SELECT**.
2. Enter the telephone number and then press **CELL** or **SELECT** to dial.

### Answer a home/cell call with a handset:

- Press **HOME**, **CELL**, or any dialing keys.

### Answer a home/cell call at the telephone base:

- Press **HOME**, **CELL** or any dialing keys.



### End a home/cell call with a handset:

- Press **OFF** or return the handset to the telephone base or handset charger.

### End a home/cell call at the telephone base:

- For a home line call, press **HOME**.
- For a cell line call, press **CELL**.

### Call waiting

When you subscribe to call waiting service from your telephone service provider, you hear an alert tone if there is an incoming call while you are already on another call.

#### Call waiting on the home line:

- Press **FLASH** to put the current call on hold and take the new call.
- Press **FLASH** at any time to switch back and forth between calls.

#### Call waiting on the cell line:

- Press **CELL** on the handset or **FLASH** on the telephone base to put the current call on hold and take the new call.
- Press **CELL** on the handset or **FLASH** on the telephone base at any time to switch back and forth between calls.

### Handset speakerphone:

- During a call, press **CALL** to switch between the speakerphone and handset earpiece.

## Telephone operations - Adjust volume

### Volume

#### To adjust the listening volume on a handset:

- During a call, press **VOLUME DOWN** or **VOLUME UP**.

#### To adjust the listening volume at the telephone base:

- During a call, press **VOL DOWN** or **VOL UP**.

#### note

The handset earpiece volume setting and speakerphone volume setting are independent.

### Mute

The mute function allows you to hear the other party but the other party cannot hear you.

- To mute a call on a handset, press **MUTE**. The handset displays **Muted**. Press **MUTE** again to resume the conversation.
- To mute a call at the telephone base, press **MUTE**. The telephone base displays **Muted** and the **MUTE** light turns on. Press **MUTE** again to resume the conversation.

### Temporary ringer silencing

When the telephone is ringing, you can temporarily silence the telephone base/handset ringer without disconnecting the call. The next call rings normally at the preset volume.

- To silence the handset ringer, press **OFF** or **MUTE** on the handset. **OFF** displays and **Ringer muted** displays briefly.
- To silence the telephone base ringer, press **MUTE**, **CANCEL** or **VOLUME DOWN** on the telephone base. **OFF** displays and **Ringer muted** displays briefly.



## Telephone operations - Multiple device use

### Join a call in progress

You can use the telephone base and a handset, or two handsets at a time on a home line call. You can buy additional expansion handsets (**DS6701**) for this telephone base. You can register up to five handsets to the telephone base.

- When a device is on a home line call, press **HOME** or **CALL** on another handset, or press **HOME** on the telephone base.
- To exit the call, press **OFF** on the handset, return it to the telephone base or handset charger, or press **HOME** on the telephone base. The call continues until all devices hang up.

### Transfer a call

While on an outside call, you can transfer the call from one system device to another.

#### Using a handset:

1. During a call, press **MENU**.
2. Scroll to **Transfer**, then press **SELECT**. When you have more than one handset, enter a destination device number (**7** for the telephone base, or **1** to **5** for **HANDSET 1** to **HANDSET 5**).
3. To answer the call on the telephone base or a handset, press **HOME**, **CALL**, or any dialing keys.

#### Using the telephone base:

1. During a call, press **MENU**.
2. When you have only one handset, the screen displays **Transfer call?** Press **SELECT**.  
**-OR-**  
When you have more than one handset, enter a destination handset number (**1** to **5** for **HANDSET 1** to **HANDSET 5**).
3. To answer the call on a handset, press **HOME**, **CALL** or any dialing keys.

### Intercom

Use the intercom feature for conversations between the telephone base and a handset, or two handsets.

1. Press **MENU** on the telephone base/handset when not in use.
2. Scroll to **Intercom**, then press **SELECT**. When you have more than one handset, enter a destination device number (**7** for the telephone base, or **1** to **5** for **HANDSET 1** to **HANDSET 5**).
3. To answer the intercom call with the destination handset, press **HOME**, **CALL**, or any dialing keys.  
**-OR-**  
To answer the intercom call with the telephone base, press **HOME**, **CALL** or any dialing keys.
4. To end the intercom call while using a handset, press **OFF** or return the handset to the telephone base or handset charger.  
**-OR-**  
To end the intercom call while using the telephone base, press **HOME**.

### Answer an incoming call during an intercom call

When you receive an outside call during an intercom call, there is an alert tone.

#### Using a handset:

- To answer a home call, press **HOME**. The intercom call ends automatically.
- To answer a cell call, press **OFF** to end the intercom call. The telephone continues to ring. Then press **CALL**.
- To end the intercom call without answering the outside call, press **OFF**. The intercom call ends and the telephone continues to ring.

#### Using the telephone base:

- To answer a home call, press **HOME** to end the intercom call. The telephone continues to ring. Then press **HOME**.
- To answer a cell call, press **HOME** to end the intercom call. The telephone continues to ring. Then press **CALL**.
- To end the intercom call without answering the outside call, press **HOME**. The intercom call ends and the telephone continues to ring.

## Telephone operations - Others

### Temporary tone dialing

If you have pulse (rotary) service only, you can switch from pulse to tone dialing temporarily during a call.

1. During a call, press **TONEX**.
2. Use the dialing keys to enter the relevant number. The telephone sends touch-tone signals. It automatically returns to pulse dialing mode after you end the call.

## Find handset

Use this feature to find all system handsets.

### To start paging:

- Press **FIND HANDSET** at the right side of the telephone base and it displays **\*\* Paging \*\***. All idle handsets ring and display **\*\* Paging \*\***.

### To end paging:

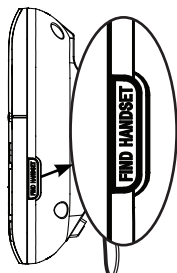
- Press **HOME**, **CELL**, **OFF** or any dialing keys on a handset.

**-OR-**

- Return the handset to the telephone base or handset charger.

**-OR-**

- Press **FIND HANDSET** on the telephone base.



### note

Do not press and hold **FIND HANDSET** for more than four seconds. It may lead to handset deregistration.

## Directory

The directory can store up to 200 entries which are shared by the telephone base and all system handsets.

### To add a directory entry:

1. Press **MENU** when the phone is not in use.
2. Scroll to **Directory**, then press **SELECT**.
3. Scroll to **Add contact**, then press **SELECT**.
4. Enter the number (up to 30 digits).

**-OR-**

Copy a number from the redial list by pressing **REDIAL** and then press **▼**, **▲** or **REDIAL** repeatedly to select a number. Press **SELECT**.

5. Press **SELECT** to move to the name.
6. Enter the name (up to 15 characters). Additional key presses show other characters of that particular key.
7. Press **SELECT** to save.

While entering names and numbers, you can:

- Press **DELETE** to backspace and erase a digit or character.
- Press and hold **DELETE** to erase the entire entry.
- Press and hold **PAUSE** to insert a dialing pause (for entering phone numbers only).
- Press **▼** or **▲** to move the cursor to the left or right.
- Press **0** to add a space (for entering names only).
- Press **TONEX** to add **X** (t appears) or **QUIET#** to add **#** (h appears).

### To review and dial from the directory:

Entries are sorted alphabetically.

1. Press **□** when the phone is not in use.
2. Scroll to browse through the directory, or use the dialing keys to start a name search.
3. To dial the displayed entry with the handset, press **HOME**, **CELL**, or **OFF**.

**-OR-**

To dial the displayed entry with the telephone base, press **HOME** or **CELL**.

### To edit a directory entry:

1. When the desired entry displays, press **SELECT**.
2. Edit the number when necessary, then press **SELECT**.
3. Edit the name when necessary, then press **SELECT**.

### To delete a directory entry:

1. When the desired entry displays, press **DELETE**.
2. When the screen displays **Delete contact?**, press **SELECT**.

### To delete all directory entries:

1. Press **MENU** when the phone is not in use.
2. Scroll to **Directory**, then press **SELECT**.
3. Scroll to **Del all conts**, press **SELECT**.
4. When the screen displays **Delete all?**, press **SELECT**.

## Speed dial

You can copy up to nine directory entries into the speed dial locations (**0** and **2-9**) so that you can dial these numbers via the home line more quickly.

### To assign a speed dial entry:

1. Press **MENU** when the phone is not in use.
2. Scroll to **Directory**, then press **SELECT**.
3. Scroll to **Speed dial**, then press **SELECT**.
4. Scroll to a desired speed dial location, then press **SELECT**.
5. Scroll to a desired directory entry, then press **SELECT**.

### To dial a speed dial entry:

- Press and hold a dialing key (**0** or **2-9**) to dial the number stored in the corresponding location.

### To delete a speed dial entry:

1. Press **MENU** when the phone is not in use.
2. Scroll to **Directory**, then press **SELECT**.
3. Scroll to **Speed dial**, then press **SELECT**.
4. Scroll to a desired speed dial location, then press **DELETE**. The screen displays **Clear SD #X?** Press **SELECT**.

## Caller ID

This product supports caller ID services provided by most telephone service providers. Depending on your service subscription, you may see the caller's name, number, date and time of calls that are sent by your telephone service provider after the first or second ring.

### Caller ID log

The caller ID log stores up to 50 entries. If you answer a call before the caller information appears, it will not be saved in the caller ID log.

- The telephone base and handset display **XX missed calls** when there are calls that have not been reviewed in the caller ID log.
- If you want to erase the missed call indicator, press and hold **CANCEL** when the telephone base/handset is not in use.

### To review and dial a number in the caller ID log:

1. Press **CID** when the phone is not in use.
2. Scroll to browse through the caller ID log. When the desired entry appears:
  - Press **QUIET#** repeatedly to show different dialing options.
  - Press **1** repeatedly if you need to add or remove 1 in front of the phone number.
3. To dial the displayed number with a handset, press **HOME**, **CELL** or **PHONE**.

**-OR-**

To dial the displayed number with the telephone base, press **HOME** or **CELL**.

### To save a caller ID log entry to the directory:

1. When the desired caller ID log entry displays, press **SELECT**.
2. Modify the number when necessary, then press **SELECT**.
3. Modify the name when necessary, then press **SELECT** to save.

### To delete a caller ID log entry:

- When the desired caller ID log entry displays, press **DELETE**.

### To delete all caller ID log entries:

1. Press **MENU** when the phone is not in use.
2. Scroll to **Caller ID log**, then press **SELECT**.
3. Scroll to **Del all calls**, then press **SELECT** twice.

## Redial list

Each handset and the telephone base store the last 10 telephone numbers dialed. When there are already 10 entries, the oldest entry is deleted to make room for the new entry.

### To review and dial a number from the redial list:

1. Press **REDIAL** when the telephone base/handset is not in use.
2. Press **DOWN**, **UP**, or **REDIAL** repeatedly until the desired entry displays.
3. Press **HOME** or **CELL** to dial.

### To delete a redial entry:

- When the desired redial entry displays, press **DELETE**.

## About answering system and voicemail

Your telephone has separate indicators for two different types of voice messages: those left on its built-in answering system and those left at your telephone service provider's voicemail. Each alerts you to new messages differently.

- If **PLAY/STOP** on the telephone base flashes, and **XX new messages** displays on the handsets and telephone base, there are new messages in the built-in answering system. It can record up to 99 messages, depending on the length of each message. Each message can be up to three minutes in length. The total recording time is approximately 14 minutes.
- If **MAIL** and **New voicemail** display on the handsets and the telephone base, your telephone service provider is indicating that it has new voicemail for you. Contact your telephone service provider for more information on how to access your voicemail.

## Answering system settings

Default settings are indicated by asterisks (\*).

| Settings menu         | Description  | Options  |
|-----------------------|--|--|
| <b>Call screening</b> | Set whether you hear the callers while they are leaving messages to you.                             | <b>Screening: On*</b> ;<br><b>Screening: Off</b>             |
| <b># of rings</b>     | Set the number of times the telephone rings before the answering system answers.                     | <b>6; 5; 4; 3*</b> ; <b>2</b> ;<br><b>Toll saver</b>         |
| <b>Remote code</b>    | Set a two-digit security code to access the answering system remotely from any touch-tone telephone. | <b>19*</b>   |
| <b>Msg alert tone</b> | Set whether the telephone base beeps to alert you of new messages.                                   | <b>Tone: Off*</b> ;<br><b>Tone: On</b>                       |
| <b>Recording time</b> | Set the recording time for each incoming message.  | <b>3 minutes*</b> ;<br><b>2 minutes</b> ;<br><b>1 minute</b> |

## Answering system operation

### Turn the answering system on or off

The answering system must be turned on to answer and record messages.

- Press **⏻/ANS ON/OFF** on the telephone base to turn the built-in answering system on or off.

### Message playback at the telephone base

- Press **▶/■/PLAY** when the telephone base is not in use.

#### Options during playback:

- Press **▼/VOL** or **▲/VOL** to adjust the listening volume.
- Press **▶/■/SKIP** to skip to the next message.
- Press **◀/REPEAT** to repeat the playing message. Press **◀/REPEAT** twice to listen to the previous message.
- Press **X/DELETE** to delete the playing message. The system advances to the next message.
- Press **▶/■/STOP** to stop.

### Call intercept

If you want to talk to the person whose message is being recorded:

- On a handset, press **🏠/HOME** or **📞**.

**-OR-**

- On the telephone base, press **🏠/HOME**.

### Remote access

You can access the answering system remotely from any touch-tone telephone. The preset remote access code is **19**.

1. Dial your telephone number from any touch-tone telephone.
2. When the answering system answers, enter the two-digit remote access code.
3. Press **X5** to hear a list of remote commands.
4. Enter the desired remote command code.
5. Hang up or press **8** to end the call.

## Expand your telephone system

You can add new handsets (**DS6701**, purchased separately) to your telephone system. Your telephone base supports a maximum of five handsets.

For more details, refer to the user's manual that comes with your **DS6701** new handset.

## Troubleshooting

If you have difficulty with your telephone, please try the suggestions below. For customer service, visit our website at [www.vtechphones.com](http://www.vtechphones.com) or call **1 (800) 595-9511**. In Canada, go to [www.vtechcanada.com](http://www.vtechcanada.com) or call **1 (800) 267-7377**.

### I cannot add and connect my cell phone to the telephone base.

- Make sure you have cellular coverage.
- Make sure your cell phone is compatible with your **DS6751/DS6752**. Check the Bluetooth compatibility list at [www.vtechphones.com](http://www.vtechphones.com).
- Make sure the Bluetooth function of your cell phone is turned on. See the user's manual of your cell phone for more information.
- Make sure that your Bluetooth cell phone is not connected to any other Bluetooth device.
- To connect your cell phone, make sure that your cell phone is connected and active on the device list.
- Remove **VTech DS6751/VTech DS6752** from your cell phone's handsfree device history list (see the user's manual of your cell phone for more information).
- Carefully follow the pairing instructions on pages 6-7 and make sure that your cell phone is not connected to any other Bluetooth device.
- Turn off your cell phone, then turn it on again.
- For some cell phones, you must authorize **VTech DS6751/VTech DS6752** device in your cell phone's Bluetooth feature. See the user's manual of your cell phone for more information.
- Manually connect your cell phone to **VTech DS6751/VTech DS6752**. Refer to the user's manual of your cell phone for more information.
- Reset the telephone base. Unplug the unit's electrical power. Wait for approximately 15 seconds, then plug it back in. Repeat the above suggestions.

### The PIN on the telephone base does not work.

- Make sure you enter the correct PIN. The default PIN is **0000**.

### Can the DS6751/DS6752 help the poor cell phone reception in my house?

- If your cell phone has poor reception in your home, the **DS6751/DS6752** cannot improve the reception. However, if there is a location in your house with better reception, you can leave your cell phone at that location while you use the **DS6751/DS6752** cell line. In order for this to work, the telephone base must be within 30 feet of the cell phone.

### My telephone does not work at all.

- Make sure the battery is installed and charged correctly. For optimum daily performance, return the handset to the telephone base or handset charger after use.
- Make sure the power adapter is securely plugged into an outlet not controlled by a wall switch.
- Make sure the telephone line cord is plugged firmly into the telephone base and the wall jack.
- Unplug the electrical power to the telephone base. Wait for approximately 15 seconds, then plug it back in. Allow up to one minute for the cordless handset and telephone base to synchronize.
- Charge the battery in the cordless handset for at least 11 hours. For optimum daily performance, return the cordless handset to the telephone base or handset charger after use.
- If the battery is completely depleted, charge the cordless handset for at least 30 minutes before use.
- Remove and install the battery again. If that still does not work, it may be necessary to purchase a new battery.
- Disconnect the telephone base from the telephone wall jack and plug in a working telephone. If the other telephone does not work, the problem is probably in the wiring or telephone service. Contact your telephone service provider.

### The display shows No line. I cannot hear the dial tone.

- Disconnect the telephone line cord from your telephone and connect it to another telephone. If there is no dial tone on that other telephone either, then the telephone line cord may be defective. Try installing a new telephone line cord.
- If changing telephone line cord does not help, the wall jack (or the wiring to this wall jack) may be defective. Contact your telephone service provider.
- You may be using a new cable or VoIP service, the existing telephone jacks in your home may no longer work. Contact your service provider for solutions.

### The display shows To register HS... and ...see manual alternately. The handset does not work at all.

- The handset is deregistered from the telephone base. Place the handset in the telephone base to register it back. The handset shows **Registered** and you hear a beep when the registration process completes. This process takes about 60 seconds to complete.

### I have accidentally set my handset/telephone base LCD language to Spanish or French, and I don't know how to change it back to English.

- While the handset/telephone base is not in use, press **MENU**, then enter **\*364#**.
- While the handset is on a call, press **MENU**, then enter **\*364#**. The call ends.

### The answering system does not record messages.

- Make sure the answering system is on.
- Make sure the memory of the answering system is not full. When the answering machine memory is full, it does not record new messages until some old messages are deleted.
- If you subscribe to voicemail service, change the number of ring so that your answering system answers before your voicemail answers. To determine how many rings activate your voicemail, contact your telephone service provider.
- If there is a fax machine connected to the same telephone line, try disconnecting the fax machine. If that solves the problem, consult your fax machine documentation for information on compatibility with answering systems.

### Common cure for electronic equipment.

- If the telephone is not responding normally, put the cordless handset in the telephone base. If this does not fix the problem, do the following (in the order listed):
  1. Disconnect the power to the telephone base.
  2. Disconnect the battery on the cordless handset.
  3. Wait a few minutes before connecting power to the telephone base.
  4. Install the battery again and place the cordless handset in the handset charger.
  5. Wait for the cordless handset to synchronize with the telephone base. Allow up to one minute for this to take place.

# Maintenance

## Taking care of your telephone

Your cordless telephone contains sophisticated electronic parts, so it must be treated with care.

## Avoid rough treatment

Place the handset down gently. Save the original packing materials to protect your telephone if you ever need to ship it.

## Avoid water

Your telephone can be damaged if it gets wet. Do not use the handset outdoors in the rain, or handle it with wet hands. Do not install the telephone base near a sink, bathtub or shower.

## Electrical storms

Electrical storms can sometimes cause power surges harmful to electronic equipment. For your own safety, take caution when using electrical appliances during storms.

## Cleaning your telephone

Your telephone has a durable plastic casing that should retain its luster for many years. Clean it only with a soft cloth slightly dampened with water or mild soap. Do not use excess water or cleaning solvents of any kind.

Remember that electrical appliances can cause serious injury if used when you are wet or standing in water. If the telephone base should fall into water, DO NOT RETRIEVE IT UNTIL YOU UNPLUG THE POWER CORD AND TELEPHONE LINE CORD FROM THE WALL. Then remove the telephone by the unplugged cords.

# The RBRC® seal



The RBRC® seal on the nickel-metal hydride battery indicates that VTech Communications, Inc. is voluntarily participating in an industry program to collect and recycle these batteries at the end of their useful lives, when taken out of service within the United States and Canada.

The RBRC® program provides a convenient alternative to placing used nickel-metal hydride batteries into the trash or municipal waste, which may be illegal in your area.

VTech's participation in RBRC® makes it easy for you to drop off the spent battery at local retailers participating in the RBRC® program or at authorized VTech product service centers. Please call **1 (800) 8 BATTERY®** for information on Ni-MH battery recycling and disposal bans/restrictions in your area. VTech's involvement in this program is part of its commitment to protecting our environment and conserving natural resources.

**RBRC® and 1 (800) 8 BATTERY® are registered trademarks of the Rechargeable Battery Recycling Corporation.**

# FCC, ACTA and IC regulations

## FCC Part 15

This equipment has been tested and found to comply with the requirements for a Class B digital device under Part 15 of the Federal Communications Commission (FCC) rules. These requirements are intended to provide reasonable protection against harmful interference in a residential installation. This equipment generates, uses and can radiate radio frequency energy and, if not installed and used in accordance with the instructions, may cause harmful interference to radio communications. However, there is no guarantee that interference will not occur in a particular installation. If this equipment does cause harmful interference to radio or television reception, which can be determined by turning the equipment off and on, the user is encouraged to try to correct the interference by one or more of the following measures:

- Reorient or relocate the receiving antenna.
- Increase the separation between the equipment and receiver.
- Connect the equipment into an outlet on a circuit different from that to which the receiver is connected.
- Consult the dealer or an experienced radio/TV technician for help.

**WARNING:** Changes or modifications to this equipment not expressly approved by the party responsible for compliance could void the user's authority to operate the equipment.

This device complies with Part 15 of the FCC rules. Operation is subject to the following two conditions: (1) this device may not cause harmful interference, and (2) this device must accept any interference received, including interference that may cause undesired operation. Privacy of communications may not be ensured when using this telephone.

To ensure safety of users, the FCC has established criteria for the amount of radio frequency energy that can be safely absorbed by a user or bystander according to the intended usage of the product. This product has been tested and found to comply with the FCC criteria. The handset may be safely held against the ear of the user. The telephone base shall be installed and used such that parts of the user's body other than the hands are maintained at a distance of approximately 20 cm (8 inches) or more.

This Class B digital apparatus complies with Canadian requirement:

CAN ICES-3 (B)/NMB-3(B)

## FCC Part 68 and ACTA

This equipment complies with Part 68 of the FCC rules and with technical requirements adopted by the Administrative Council for Terminal Attachments (ACTA). The label on the back or bottom of this equipment contains, among other things, a product identifier in the format US:AAAEQ#TXXXX. This identifier must be provided to your telephone service provider upon request.

The plug and jack used to connect this equipment to premises wiring and the telephone network must comply with applicable Part 68 rules and technical requirements adopted by ACTA. A compliant telephone cord and modular plug is provided with this product. It is designed to be connected to a compatible modular jack that is also compliant. An RJ11 jack should normally be used for connecting to a single line and an RJ14 jack for two lines. See the installation instructions in the user's manual.

The Ringer Equivalence Number (REN) is used to determine how many devices you may connect to your telephone line and still have them ring when you are called. The REN for this product is encoded as the 6th and 7th characters following the US: in the product identifier (e.g., if ## is 03, the REN is 0.3). In most, but not all areas, the sum of all RENs should be five (5.0) or less. For more information, please contact your telephone service provider.

This equipment may not be used with Party Lines. If you have specially wired alarm dialing equipment connected to your telephone line, ensure the connection of this equipment does not disable your alarm equipment. If you have questions about what will disable alarm equipment, consult your telephone service provider or a qualified installer.

If this equipment is malfunctioning, it must be unplugged from the modular jack until the problem has been corrected. Repairs to this telephone equipment can only be made by the manufacturer or its authorized agents. For repair procedures, follow the instructions outlined under the **Limited warranty**.

If this equipment is causing harm to the telephone network, the telephone service provider may temporarily discontinue your telephone service. The telephone service provider is required to notify you before interrupting service. If advance notice is not practical, you will be notified as soon as possible. You will be given the opportunity to correct the problem and the telephone service provider is required to inform you of your right to file a complaint with the FCC. Your telephone service provider may make changes in its facilities, equipment, operation, or procedures that could affect the proper functioning of this product. The telephone service provider is required to notify you if such changes are planned.

If this product is equipped with a corded or cordless handset, it is hearing aid compatible.

If this product has memory dialing locations, you may choose to store emergency telephone numbers (e.g., police, fire, medical) in these locations. If you do store or test emergency numbers, please:

Remain on the line and briefly explain the reason for the call before hanging up.

Perform such activities in off-peak hours, such as early morning or late evening.

## Industry Canada

This device complies with Industry Canada licence-exempt RSS standard(s).

Operation is subject to the following two conditions: (1) this device may not cause harmful interference, and (2) this device must accept any interference received, including interference that may cause undesired operation.

Privacy of communications may not be ensured when using this telephone.

The term "IC:" before the certification/registration number only signifies that the Industry Canada technical specifications were met.

The Ringer Equivalence Number (REN) for this terminal equipment is 1.0. The REN indicates the maximum number of devices allowed to be connected to a telephone interface. The termination of an interface may consist of any combination of devices subject only to the requirement that the sum of the RENs of all the devices does not exceed five.

This product meets the applicable Innovation, Science and Economic Development Canada technical specifications.



# For C-UL compliance only

## Mesures de sécurité importantes

Afin de réduire les risques d'incendie, de blessures corporelles ou d'électrocution, suivez toujours ces mesures préventives de base lorsque vous utilisez votre téléphone :

1. Lisez et comprenez bien toutes les instructions.
2. Observez toutes les instructions et mises en garde inscrites sur l'appareil.
3. Débranchez ce téléphone de la prise murale avant de le nettoyer. N'utilisez pas de nettoyeurs liquides ni en aérosol. N'utilisez qu'un chiffon doux et légèrement humecté.
4. N'utilisez pas ce produit près de l'eau, tel que près d'un bain, d'un lavabo, d'un évier de cuisine, d'un bac de lavage ou d'une piscine, ou dans un sous-sol humide ou sous la douche.
5. Ne déposez pas ce téléphone sur un chariot, support ou table chancelants. L'appareil pourrait tomber et être sérieusement endommagé.
6. Évitez d'installer le système téléphonique dans les endroits soumis à une température extrême, à la lumière directe du soleil ou à proximité immédiate d'autres appareils électriques ou électroniques. Protégez votre téléphone contre les sources d'humidité, la poussière, les vapeurs et les liquides corrosifs.
7. Le boîtier de l'appareil est doté de fentes et d'ouvertures d'aération situées à l'arrière ou en dessous. Afin d'empêcher la surchauffe, ces ouvertures ne doivent pas être obstruées en plaçant l'appareil sur un lit, divan, tapis ou autre surface similaires. Ne placez pas cet appareil à proximité d'un élément de chauffage ni d'une plinthe électrique. De plus, ne l'installez pas dans une unité murale ou un cabinet fermé qui ne possède pas d'aération adéquate.
8. Ne faites fonctionner cet appareil qu'avec le type d'alimentation indiqué sur les étiquettes de l'appareil. Si vous ne connaissez pas le voltage de votre maison, consultez votre marchand ou votre fournisseur d'électricité.
9. Ne déposez rien sur le cordon d'alimentation. Installez cet appareil dans un endroit sécuritaire, là où personne ne pourra trébucher sur la ligne d'alimentation ni le cordon téléphonique modulaire.
10. N'insérez jamais d'objets à travers les fentes et ouvertures de cet appareil, car ils pourraient toucher à des points de tension dangereux ou court-circuiter des pièces, ce qui constituerait un risque d'incendie ou d'électrocution. N'échappez pas de liquides dans l'appareil.
11. Afin de réduire les risques d'électrocution, ne démontez pas l'appareil, mais apportez-le plutôt à un centre de service qualifié s'il doit être réparé. En enlevant le couvercle, vous vous exposez à des tensions dangereuses ou autres dangers similaires. Un remontage inadéquat peut être à l'origine d'une électrocution lors d'une utilisation ultérieure de l'appareil. Débranchez l'appareil avant de procéder au nettoyage. Utilisez un chiffon humide et doux.
12. Ne surchargez pas les prises de courant et les rallonges.
13. Débranchez cet appareil de la prise de courant et communiquez avec le département de service à la clientèle de VTech dans les cas suivants:
  - Lorsque le cordon d'alimentation est endommagé ou écorché.
  - Si du liquide a été échappé dans l'appareil.
  - Si l'appareil a été exposé à une source d'humidité telle que la pluie ou l'eau.
  - Si le produit ne fonctionne pas normalement en respectant les instructions de fonctionnement. Réglez uniquement les commandes indiquées dans les instructions de fonctionnement. Les réglages incorrects des autres commandes pourraient provoquer un dommage qui pourrait exiger un travail exhaustif de la part d'un technicien autorisé afin de rétablir le fonctionnement normal de l'appareil.
  - Si le produit a été échappé et que le socle et/ou le combiné a été endommagé.
  - Si le produit affiche une nette diminution de sa performance.
14. Évitez d'utiliser un téléphone (autre qu'un sans fil) pendant un orage. Les éclairs peuvent être à l'origine d'une électrocution.
15. N'utilisez pas le téléphone pour rapporter une fuite de gaz à proximité de la fuite. En certaines circonstances, une flammèche pourrait être provoquée lorsque l'adaptateur est branché à une prise de courant, ou lorsque le combiné est déposé sur le socle. Ceci est un événement commun associé à la fermeture d'un circuit électrique. L'utilisateur ne devrait pas brancher le téléphone à une prise de courant, et ne devrait pas déposer le combiné chargé sur le socle, si le téléphone se trouve à proximité d'un endroit comportant des concentrations de gaz inflammables, à moins que la ventilation soit adéquate. Une flammèche dans un tel endroit pourrait provoquer un incendie ou une explosion. De tels environnements peuvent comprendre: des endroits où l'on utilise de l'oxygène médical sans ventilation adéquate; des gaz industriels (dissolvants de nettoyage, des vapeurs d'essence, etc.); une fuite de gaz naturel, etc.
16. Ne placez que le combiné de votre téléphone près de votre oreille lorsqu'en mode de conversation.
17. Ces adaptateurs ont été conçus pour être orientés en position verticale ou montés au sol. Les broches ne sont pas conçues pour maintenir l'adaptateur en place si celui-ci est branché dans une prise au plafond ou sous une table/ armoire.
18. Pour le MATÉRIEL RACCORDE PAR PRISE DE COURANT, le socle de prise de courant doit être installé à proximité du matériel et doit être aisément accessible.

## CONSERVEZ CES INSTRUCTIONS

### Pile

- MISE EN GARDE : Risque d'explosion si la pile est remplacée par une pile de types incorrects. Jetez les piles épuisées en respectant les instructions.
- Ne jetez pas la pile au feu. Vérifiez les instructions spécifiques de mise au rebut auprès des autorités locales.
- N'ouvrez pas et ne mutiliez pas la pile. L'électrolyte qui s'en échapperait est corrosif et pourrait causer des brûlures ou des blessures aux yeux ou à la peau. L'électrolyte est toxique si avalé.
- Soyez prudents lorsque vous manipulez les piles afin d'éviter les courts-circuits provoqués par des matériaux conducteurs.
- Rechargez la pile incluse avec cet appareil, selon les instructions et limites spécifiées dans ce guide d'utilisation.

### Stimulateurs cardiaques implantés dans l'organisme

Les stimulateurs cardiaques (s'applique uniquement aux téléphones numériques sans fil):

L'organisme Wireless Technology Research, LLC (WTR), une firme de recherche indépendante, a mené une évaluation pluridisciplinaire des interférences entre les téléphones sans fil portatifs et les stimulateurs cardiaques implantés dans l'organisme. Appuyée par l'Administration des aliments et drogues (FDA) des États-Unis, la firme WTR recommande aux médecins:

#### Avis aux détenteurs de stimulateurs cardiaques

- Ils doivent tenir le téléphone sans fil à une distance d'au moins six pouces du stimulateur cardiaque.
- Ils ne doivent PAS placer le téléphone sans fil directement sur le stimulateur cardiaque, tel que dans une poche de chemise, lorsque celui-ci est en marche.
- Ils doivent utiliser le téléphone sans fil en l'appuyant sur l'oreille qui se trouve dans la direction opposée au stimulateur cardiaque.

L'étude effectuée par l'organisme WRS n'a pas identifié de risque pour les détenteurs de simulateurs cardiaques causés par les gens qui utilisent un téléphone sans fil à proximité de ceux-ci.

### À propos des téléphones sans fil

- **Alimentation électrique:** Les mêmes caractéristiques qui constituent des avantages pour les téléphones sans fil affichent également des restrictions. Les appels téléphoniques sont transmis entre le combiné sans fil et le socle par le biais d'ondes radio ; il y a donc la possibilité que vos conversations téléphoniques sans fil soient interceptées par des équipements de réception radio se trouvant dans la portée du combiné sans fil. Pour cette raison, vous ne devez pas percevoir les communications téléphoniques sans fil comme étant aussi confidentielles.
- **Alimentation électrique:** Le socle de ce téléphone sans fil doit être branché à une prise électrique fonctionnelle. La prise électrique ne doit pas être contrôlée par un interrupteur mural. Les appels ne pourront pas être effectués du combiné sans fil si le socle est débranché ou mis hors tension ou si le courant est coupé.
- **Possibilité d'interférences aux téléviseurs:** Certains téléphones sans fil fonctionnent sur des fréquences pouvant causer des interférences aux téléviseurs et aux magnétoscopes. Pour réduire ou prévenir de telles interférences, ne placez pas le socle du téléphone sans fil près ou sur un téléviseur ou magnétoscope. S'il y a présence de parasites, il est conseillé d'éloigner le téléphone sans fil du téléviseur ou du magnétoscope afin de réduire possiblement les interférences.
- **Piles rechargeables:** Manipulez les piles avec soin afin de ne pas les court-circuiter avec des bagues, bracelets ou clés. Les piles ou le conducteur peut surchauffer et causer des blessures. Respectez la polarité adéquate entre la pile et le chargeur.
- **Les bloc-piles rechargeables à l'hydrure métallique de nickel:** Jetez ces blocs-piles de manière écologique et sécuritaire. Ne les incinerez pas et ne les percez pas. Tel que les autres piles de ce type, elles pourraient dégager une matière toxique qui peut causer des blessures corporelles si elles sont brûlées ou percées.

## Limited warranty

### What does this limited warranty cover?

The manufacturer of this VTech Product warrants to the holder of a valid proof of purchase ("Consumer" or "you") that the Product and all accessories provided in the sales package ("Product") are free from defects in material and workmanship, pursuant to the following terms and conditions, when installed and used normally and in accordance with the Product operating instructions. This limited warranty extends only to the Consumer for Products purchased and used in the United States of America and Canada.



### What will VTech do if the Product is not free from defects in materials and workmanship during the limited warranty period ("Materially Defective Product")?

During the limited warranty period, VTech's authorized service representative will repair or replace at VTech's option, without charge, a Materially Defective Product. If we repair the Product, we may use new or refurbished replacement parts. If we choose to replace the Product, we may replace it with a new or refurbished Product of the same or similar design. We will retain defective parts, modules, or equipment. Repair or replacement of the Product, at VTech's option, is your exclusive remedy. VTech will return the repaired or replacement Products to you in working condition. You should expect the repair or replacement to take approximately 30 days.

### How long is the limited warranty period?

The limited warranty period for the Product extends for ONE (1) YEAR from the date of purchase. If VTech repairs or replaces a Materially Defective Product under the terms of this limited warranty, this limited warranty also applies to the repaired or replacement Product for a period of either (a) 90 days from the date the repaired or replacement Product is shipped to you or (b) the time remaining on the original one-year warranty; whichever is longer.

### Register online to get an additional 3-month warranty!

### What is not covered by this limited warranty?

This limited warranty does not cover:

1. Product that has been subjected to misuse, accident, shipping or other physical damage, improper installation, abnormal operation or handling, neglect, inundation, fire, water or other liquid intrusion; or
2. Product that has been damaged due to repair, alteration or modification by anyone other than an authorized service representative of VTech; or
3. Product to the extent that the problem experienced is caused by signal conditions, network reliability, or cable or antenna systems; or
4. Product to the extent that the problem is caused by use with non-VTech accessories; or
5. Product whose warranty/quality stickers, product serial number plates or electronic serial numbers have been removed, altered or rendered illegible; or
6. Product purchased, used, serviced, or shipped for repair from outside the United States of America or Canada, or used for commercial or institutional purposes (including but not limited to Products used for rental purposes); or
7. Product returned without a valid proof of purchase (see item 2 below); or
8. Charges for installation or set up, adjustment of customer controls, and installation or repair of systems outside the unit.

### How do you get warranty service?

To obtain warranty service in the USA, please visit our website at [www.vtechphones.com](http://www.vtechphones.com) or call 1 (800) 595-9511. In Canada, go to [www.vtechcanada.com](http://www.vtechcanada.com) or call 1 (800) 267-7377.

**NOTE:** Before calling for service, please review the user's manual - a check of the Product's controls and features may save you a service call.

Except as provided by applicable law, you assume the risk of loss or damage during transit and transportation and are responsible for delivery or handling charges incurred in the transport of the Product(s) to the service location. VTech will return repaired or replaced Product under this limited warranty. Transportation, delivery or handling charges are prepaid. VTech assumes no risk for damage or loss of the Product in transit. If the Product failure is not covered by this limited warranty, or proof of purchase does not meet the terms of this limited warranty, VTech will notify you and will request that you authorize the cost of repair prior to any further repair activity. You must pay for the cost of repair and return shipping costs for the repair of Products that are not covered by this limited warranty.

### What must you return with the Product to get warranty service?

1. Return the entire original package and contents including the Product to the VTech service location along with a description of the malfunction or difficulty; and
2. Include a "valid proof of purchase" (sales receipt) identifying the Product purchased (Product model) and the date of purchase or receipt; and
3. Provide your name, complete and correct mailing address, and telephone number.

### Other limitations

This warranty is the complete and exclusive agreement between you and VTech. It supersedes all other written or oral communications related to this Product. VTech provides no other warranties for this Product. The warranty exclusively describes all of VTech's responsibilities regarding the Product. There are no other express warranties.

No one is authorized to make modifications to this limited warranty and you should not rely on any such modification.

**State/Provincial Law Rights:** This warranty gives you specific legal rights, and you may also have other rights, which vary from state to state or province to province.

**Limitations:** Implied warranties, including those of fitness for a particular purpose and merchantability (an unwritten warranty that the Product is fit for ordinary use) are limited to one year from the date of purchase. Some states/provinces do not allow limitations on how long an implied warranty lasts, so the above limitation may not apply to you. In no event shall VTech be liable for any indirect, special, incidental, consequential, or similar damages (including, but not limited to lost profits or revenue, inability to use the Product or other associated equipment, the cost of substitute equipment, and claims by third parties) resulting from the use of this Product. Some states/provinces do not allow the exclusion or limitation of incidental or consequential damages, so the above limitation or exclusion may not apply to you.

**Please retain your original sales receipt as proof of purchase.**

## Technical specifications

|                         |   |
|-------------------------|---|
| Frequency control       | Crystal controlled PLL synthesizer  |
| Transmit frequency      | DECT frequency: 1921.536-1928.448 MHz<br>Bluetooth frequency: 2402.000-2480.000 MHz   |
| Channels                | DECT channel: 5<br>Bluetooth channel: 79  |
| Nominal effective range | Maximum power allowed by FCC and IC. Actual operating range may vary according to environmental conditions at the time of use.              |
| Power requirements      | Handset: 2.4V Ni-MH battery<br>Telephone base: 6V DC @ 400mA<br>Charger: 6V AC @ 300mA  |
| Memory                  | Directory: 200 memory locations; up to 30 digits and 15 characters<br>Caller ID log: 50 memory locations; up to 24 digits and 15 characters |



Telephones identified with this logo have reduced noise and interference when used with most T-coil equipped hearing aids and cochlear implants. The TIA-1083 Compliant Logo is a trademark of the Telecommunications Industry Association. Used under license.



The ENERGY STAR® program ([www.energystar.gov](http://www.energystar.gov)) recognizes and encourages the use of products that save energy and help protect our environment. We are proud to mark this product with the ENERGY STAR® label indicating it meets the latest energy efficiency guidelines.



The Bluetooth® word mark and logos are owned by Bluetooth SIG, Inc. and any use of such marks by VTech Holdings Limited is under license. VTech Holdings Limited is a member of Bluetooth SIG, Inc. Other trademarks and trade names are those of their respective owners.



Specification are subject to change without notice.  
© 2016 VTech Communications, Inc.  
All rights reserved. 12/16. DS6751-X\_ACIB\_V6.0  
Document order number: 91-007247-060-100

