

Go to www.vtechphones.com to register your product for enhanced warranty support and the latest VTech product news.

VM3261
VM3261-2

Video Monitor



vtech
User's manual

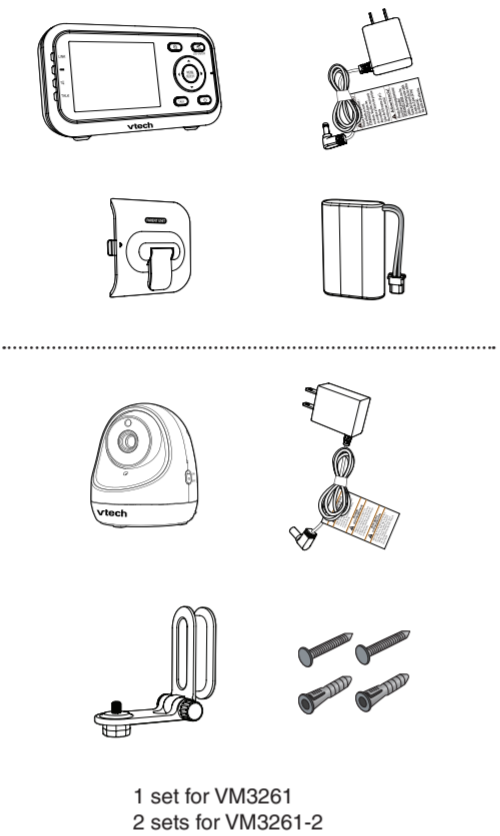
Congratulations

on purchasing your new VTech product. Before using this product, please read **Important safety instructions**.

This manual has all the feature operations and troubleshooting necessary to install and operate your new VTech product. Please review this manual thoroughly to ensure proper installation and operation of this innovative and feature rich VTech product.

For support, shopping, and everything new at VTech, visit our website at www.vtechphones.com.

What's in the box



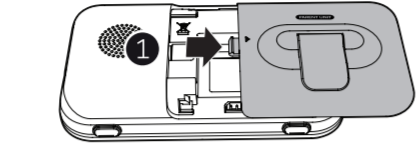
Install the battery

The parent unit runs on rechargeable battery or AC power. To continuously monitor your baby, make sure you use both battery and AC power at the same time. With the battery alone, the parent unit can cordlessly run for a short time only.

NOTES

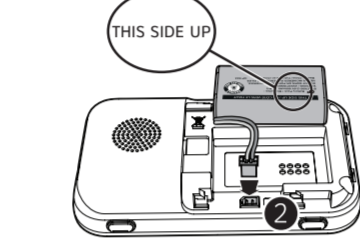
- Use only the battery supplied with this product.
- If the parent unit will not be used for a long time, disconnect and remove the battery to prevent possible leakage.

Install the battery as shown below.



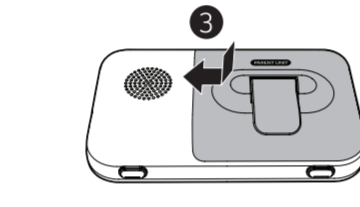
NOTE

- Press down on the battery compartment cover to pull it out.



NOTE

- Make sure the label **THIS SIDE UP** is facing up while inserting the battery.



Replace the battery

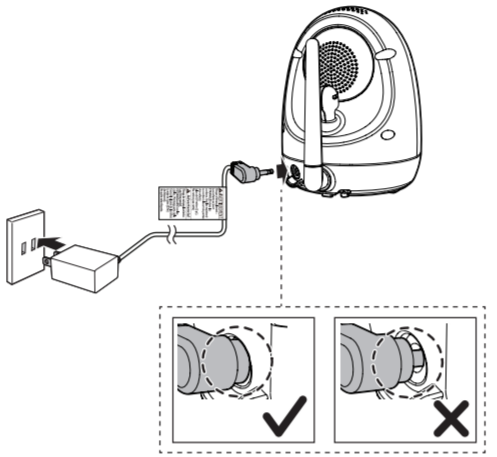
To replace the battery, pull out the battery compartment cover, and then lift up the battery. Follow the steps above to install the new battery.

Connect and charge the battery

NOTES

- Use only the power adapters supplied with this product.
- Make sure the electrical outlets are not controlled by wall switches.
- The power adapters are intended to be correctly oriented in a vertical or floor mount position. The prongs are not designed to hold the plug in place if they are plugged into a ceiling, under-the-table or cabinet outlet.
- Make sure the parent unit, the baby unit and the power adapter cords are out of reach of children.

Connect the baby monitor



Charge the parent unit battery

When you have connected the parent unit and installed its battery for the first time or after power outage, the parent unit powers on automatically. The battery icon indicates the battery status (see the following table).

NOTES

- The parent unit battery is fully charged after 11 hours of continuous charging.
- It takes longer to charge the battery when the parent unit is turned on. To shorten the charging time, turn the parent unit off while charging.
- The standby time varies depending on the volume level you set, your actual use and the age of the battery.

Battery indicators	Battery status	Action
The battery icon is off and displays.	No battery is installed but operates using AC power, or the battery has been installed incorrectly.	Install the parent unit battery. Charge without interruption (at least 30 minutes).
The screen displays Battery low at Parent Unit and . The light flashes.	The battery has very little charge and may be used for only a short time.	Charge without interruption (about 30 minutes).
The battery icon becomes solid .	The battery is fully charged.	To keep the battery charged, connect it to AC power when not in use.

Before use

NOTE

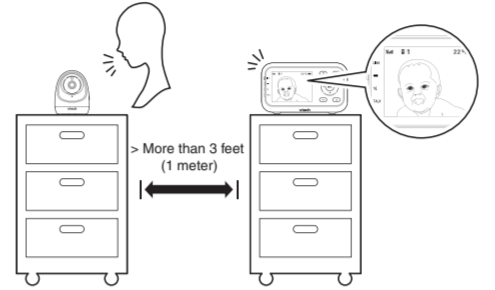
- This baby monitor is intended as an aid. It is not a substitute for proper adult supervision, and should not be used as such.

Test your baby monitor

You may test the baby monitor before initial use, and at regular times thereafter.

CAUTION

- For hearing protection, make sure the parent unit is more than 3 feet (1 meter) away from both baby units. If you hear any high-pitched noise, move the parent unit further until the noise stops. You can also press **VOL-** on the parent unit to lower or mute the noise.



- Make sure your baby units and parent unit are on.
- The parent unit displays images from the baby unit.
 - Speak towards the microphone of the baby unit. You will hear the sound at the parent unit.
- If you have two baby units, press at the right side of your parent unit. The screen switches to other baby unit. Then, repeat step 2.

NOTE

- When the parent unit displays **No link to Camera**, and the **LINK** LED light flashes, move the parent unit closer to the baby units (observe the minimum distance of 3 feet/ 1 meter). You can also check if the baby monitor is connected to a live power socket and switched on.

TIP

- Increase the speaker volume of the parent unit if you cannot hear the sounds transmitted from the baby units.

Positioning the baby monitor

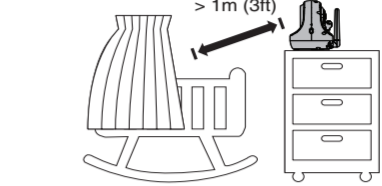
CAUTION

- Keep the baby unit out of the reach of your baby. Never place or mount the baby unit inside the baby's crib or playpen.

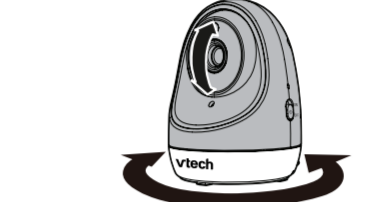
NOTE

- To avoid interference from other electronic devices, place your baby monitor far away from devices such as wireless routers, microwaves, cell phones and computers.

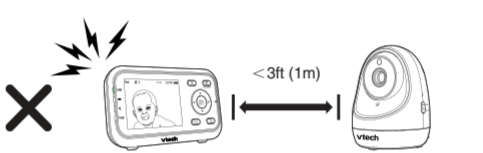
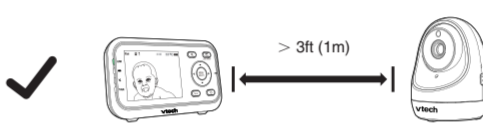
- Place the baby units more than 3 feet (1 meter) away from your baby.



- Adjust the angle of the baby unit camera to aim at your baby.



- Place the parent unit more than 3 feet (1 meter) away from the baby units.



CAUTION

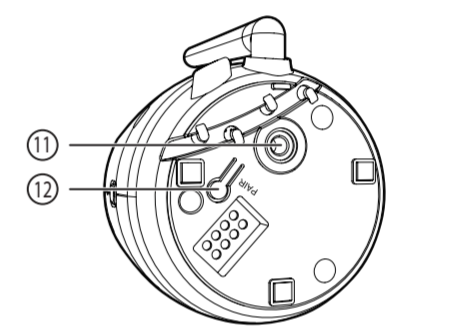
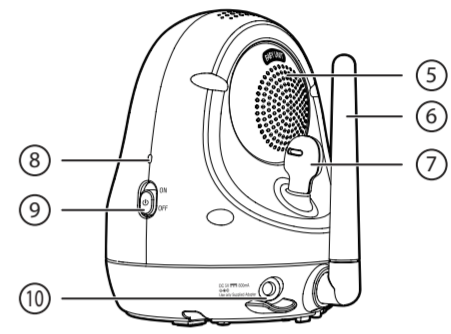
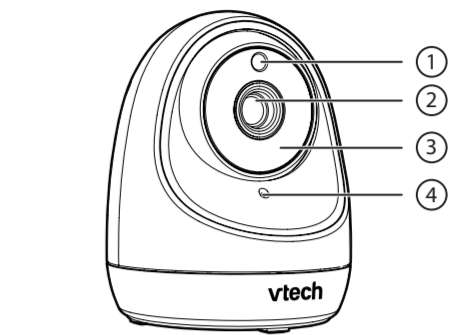
- The default volume of your parent unit is level 3, and the maximum volume is level 5. If you experience high-pitched screeching noise from your baby monitor while positioning:
 - Make sure your baby units and parent unit are more than 3 feet (1 meter) apart, OR
 - Turn down the volume of your parent unit.

Operating range

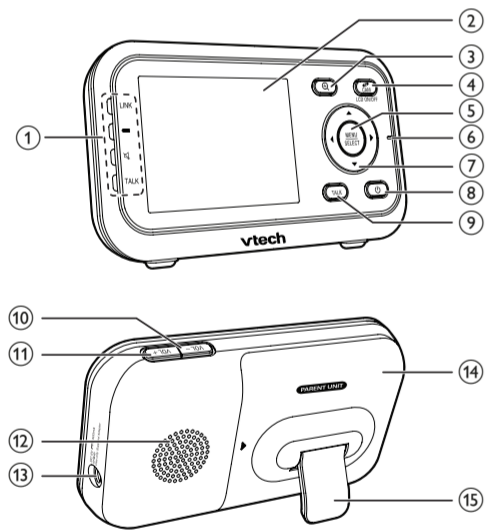
The operating range of the baby monitor is up to 1,000 feet (300 meters) outdoors or 160 feet (50 meters) indoors. The actual operating range may vary depending on the environmental conditions and other interferences such as walls, doors and other obstructions.

Overview

Baby unit overview



Parent unit overview



1	LED lights <ul style="list-style-type: none">Indicate the different statuses of the parent unit. For details, refer to Parent unit lights.
2	LCD display
3	Zoom <ul style="list-style-type: none">Press to zoom in or out while viewing image in.
4	CAM <ul style="list-style-type: none">Press to change the screen to view images from different baby units.For VM3261-2 only. LCD ON/OFF <ul style="list-style-type: none">Press and hold to turn on or off the LCD screen.
5	MENU/SELECT <ul style="list-style-type: none">Press to enter/exit the menu.While in a sub-menu, press to choose an item, or save a setting.
6	Microphone

7	<ul style="list-style-type: none">While in a menu, press to scroll up, or to enter an item's sub-menu.While zooming, press and hold to move the zoomed image upward.While in a menu, press to scroll down.While zooming, press and hold to move the zoomed image downward.While in a menu, press to choose the next item on the left, or enter into the submenu, if any.While zooming, press and hold to move the zoomed image leftward.While in a menu, press to choose the next item on the right, or return to the main menu while in submenu.While zooming, press and hold to move the zoomed image rightward.
8	On/off <ul style="list-style-type: none">Press and hold to power on.Press and hold again to power off.
9	TALK <ul style="list-style-type: none">Press and hold to talk to the selected baby unit.
10	VOL- <ul style="list-style-type: none">Turn down the volume when the speaker is on.
11	VOL+ <ul style="list-style-type: none">Turn up the volume when the speaker is on.
12	Speaker
13	Power jack
14	Battery compartment cover
15	Stand

Parent unit lights

LINK	On when the parent unit is linked to the baby unit. Flashes quickly when the link to the baby unit is nearly lost.
	On when the parent unit is connected to AC power, or the battery is charging. Flashes when the parent unit battery is low and needs charging. Off when the parent unit is disconnected from AC power.
	On when the speaker volume of the parent unit is turned off.
TALK	On when the parent unit is talking to the baby unit.

Parent unit status icons

	Connection status <ul style="list-style-type: none"> or displays when strong signal strength is detected between the baby unit and the parent unit. or displays when moderate or low signal strength is detected between the baby unit and the parent unit.
	Patrol mode <ul style="list-style-type: none">Displays when the parent unit is in PATROL mode.For VM3261-2 only.
	Current view status <ul style="list-style-type: none">Displays the number of the baby unit that is being viewed.
	Zoom <ul style="list-style-type: none">Displays when the current image on the parent unit has zoomed in.
	Night vision <ul style="list-style-type: none">Displays when the baby unit being viewed has activated the night vision feature.
	Lullaby <ul style="list-style-type: none">Displays when a lullaby is playing.

	Talkback <ul style="list-style-type: none">Displays when talking back to the baby units from parent unit.
	6-level sound indicator Displays the sound level according to the scales of loudness when there is sound transmitted from the baby unit. <ul style="list-style-type: none"> (1 to 2 bars) indicates low sound level detected by the baby unit. (3 to 4 bars) indicates moderate sound level detected by the baby unit. (5 to 6 bars) indicates high sound level detected by the baby unit (e.g. baby crying loudly).
	Mute alert <ul style="list-style-type: none">Displays when the parent unit speaker volume is set to off.
	Real-time temperature <ul style="list-style-type: none">Displays the real-time temperature detected by the baby unit in Fahrenheit (°F) or Celsius (°C) (e.g. 57°F or 14°C).
	Battery status <ul style="list-style-type: none"> animates when the battery is charging. displays solid when the battery is fully charged. displays when the battery is low and needs charging.
	AC power without battery <ul style="list-style-type: none">Displays when the parent unit is connected to AC power without the battery.
	Speaker volume <ul style="list-style-type: none">Displays the parent unit speaker volume level while adjusting.

Parent unit main menu icons

	Brightness You can change the brightness of the parent unit screen.
	LCD screen off timer You can set a specific time to screen off your parent unit.
	Temperature You can turn on the temperature alert tone so that the parent unit beeps whenever the room temperature detected by the baby unit falls outside of the desired temperature range. You can choose to display the temperature in Fahrenheit (°F) or Celsius (°C), or set the maximum/ minimum temperature limit for alerts.
	Lullaby You can select, play, or stop a lullaby.
	VOX sensitivity With this feature, you can choose to hear sounds from the baby unit all the time, or to hear sounds that exceed a certain level. You can use the parent unit to adjust the microphone sensitivity of your baby unit. The higher the sensitivity level, the more sensitive the baby unit is in detecting sounds for transmitting to the parent unit.
	Sound-activation screen When the baby unit being viewed detects no sound, the parent unit screen stays off to save power. Once a sound is detected, the parent unit screen turns on automatically. It will then turn off again after 50 seconds of no sound detection.
	Patrol mode You can monitor your baby in PATROL mode.

Parent unit warning icons and messages

	No link to Camera The selected baby unit is out of range or is turned off.
	Battery low at Parent Unit The battery is empty and needs to be recharged.
	Operation in progress.
	Temperature too high The temperature detected by the baby unit is higher/ lower than the desired temperature alert range.
	Temperature too low The parent unit is searching for baby units.

Using the baby monitor

Power on or off the baby unit

- Slide the **ON/OFF** switch to **ON** to turn on the baby unit. The **POWER** LED light turns on.
- Slide the **ON/OFF** switch to **OFF** to turn off the baby unit. The **POWER** LED light turns off.

Power on or off the parent unit

- Press and hold to turn on the parent unit. The screen turns on.
- Press and hold again to turn off the parent unit. The screen turns off.

Turn on or off the parent unit screen

You can turn on or off the parent unit screen without powering off the parent unit. You can still hear sound from the baby unit.

- Press and hold **LCD ON/OFF** on the parent unit to turn off the screen.
- Press any key on the parent unit to turn on the screen again.

Screen off timer

You can set the screen off time for the parent unit when there is no key press for a specific time interval.

When the screen is turned off, you can still hear sound from the baby unit.

- Press **MENU** when the parent unit is idle.
- Press or to choose , then press .
- Press or to choose the desired time period to time off screen- (/ / /), then press **SELECT** to confirm your selection.

Adjust LCD brightness

You can change the brightness of the parent unit screen from **Level 1** to **Level 5**. The LCD brightness is preset to **Level 3**.

- Press **MENU** when the parent unit is idle.
- Press or to choose , then press .
- Press or to choose the desired level of brightness, then press **SELECT** to confirm your selection.

Adjust the sound sensitivity of the baby unit

You can choose to hear sounds from the baby unit all the time, or to hear sounds that exceed a certain level. You can use the parent unit to adjust the microphone sensitivity of your baby unit. The higher the sensitivity level, the more sensitive the baby unit is in detecting sounds for transmitting to the parent unit. The **VOX** sound sensitivity is preset to the highest level.

Sensitivity Level		Description
Highest	High sensitivity	Highest VOX sensitivity level The parent unit speaker is constantly on, and you will hear all sounds (including background noises) from your baby's room.
High		High VOX sensitivity level The parent unit speaker turns on for soft babbling and louder sounds from your baby. It remains quiet when your baby sleeps soundly.
Medium		Medium VOX sensitivity level The parent unit speaker turns on for loud babbling and louder sounds from your baby. It remains quiet when your baby makes soft sounds.
Low		Low VOX sensitivity level The parent unit speaker turns on for crying and louder sounds from your baby. It remains quiet when your baby makes soft sounds.
Lowest	Low sensitivity	Lowest VOX sensitivity level The parent unit speaker turns on for loud crying or screeching sounds from your baby. It remains quiet when your baby makes soft sounds.

- Press **MENU** when the parent unit is idle.
- Press or to choose , then press .
- Press or to choose the desired sensitivity level, then press **SELECT** to confirm your selection.

TIP

- You can adjust the baby unit placement to improve the sound detection.

Turn on or off the sound activation

When sound activation is on, as long as no sound is detected within 50 seconds, the parent unit screen will turn off automatically to save power.

When your baby unit detects a sound, which exceeds the selected sensitivity level, the sound activation triggers the parent unit screen to turn on automatically. When no sound is detected within 50 seconds, the screen will be off again.

- Press **MENU** when the parent unit is idle.
- Press or to choose , then press .
- Press or to choose **ON** or **OFF**, then press **SELECT** to confirm your selection.

NOTES

- If the sound sensitivity is set to the highest level, or lullaby is playing, the parent unit screen may remain on continuously even though sound activation is on. This depends on whether the baby unit detects any sounds.

Adjust speaker volume

For parent unit:

- Press **VOL-/VOL+** on the parent unit to adjust the speaker volume.

NOTE

- When the parent unit speaker volume is set to zero, appears on the screen and the light turns on.

For baby unit:

The baby unit speaker volume determines the lullaby and talkback volume transmitted from your parent unit.

- Press **MENU** when the parent unit is idle.
- Press or to choose , then press .
- Press to choose .
- Press or to choose the volume level of the lullaby on the baby unit.

1	Light sensor
2	Camera
3	Infrared LEDs
4	Microphone
5	Speaker
6	Antenna <ul style="list-style-type: none">For signal reception.
7	Temperature sensor
8	ON/OFF LED light <ul style="list-style-type: none">On when the baby unit is turned on and is paired to the parent unit.Flashes when the baby unit is not being viewed; or when the link to the parent unit is lost.
9	ON/OFF switch <ul style="list-style-type: none">Slide to turn on or off the baby unit.
10	Power jack <ul style="list-style-type: none">For wall mount installation use.
11	Threaded socket <ul style="list-style-type: none">For wall mount installation use.
12	PAIR <ul style="list-style-type: none">Your baby units and parent unit provided are already paired.

- Press **SELECT** to confirm your selection.

Monitoring mode

* For VM3261-2 only.

Every time the parent unit is turned on, it displays a baby unit in **SINGLE-CAM** mode. If there are two baby units in your system, you can also monitor your baby in **PATROL** mode.

SINGLE-CAM	The screen displays image of a single baby unit in full screen.
PATROL	A single cam view that transits to a different baby unit every 10 seconds.

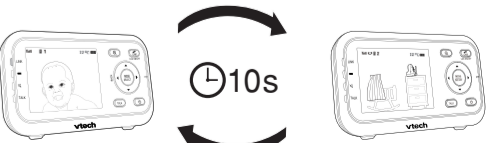
In SINGLE-CAM mode:

- Press to switch to another camera if you are in **SINGLE-CAM** mode.



In PATROL mode:

- Press **MENU** when the parent unit is idle.
- Press or to choose , then press .
- Press or to switch on or off **PATROL** mode, then press **SELECT** to confirm your selection.



Zoom

You can zoom in while viewing images from the baby unit.

- Press **Q** to zoom in.
- Press and hold **▼** or **▲** to move the zoomed image downward or upward.
- Press and hold **◄** or **►** to move the zoomed image leftward or rightward.
- Press **Q** again to zoom out.

Talk

You can use the **TALK** function of the parent unit to comfort your baby.

- Press and hold **TALK** on the parent unit. The **TALK** light turns on.
- Speak towards the microphone on the parent unit. Your voice is broadcast to the baby unit.
- Release the **TALK** key to stop the broadcast. The **TALK** light goes off.

Lullaby

The baby monitor has five lullabies and four soothing sounds for you to comfort your baby. You can play the lullabies or soothing sounds on the baby unit using the parent unit.

- Press **MENU** when the parent unit is idle.
- Press **◄** or **►** to choose **🎵**, then press **▲**.
- Press **▲** to choose **👶**, then press **◄**.
- Press **▼** or **▲** to choose a lullaby, or choose **🎵** to stop playing.
- Press **SELECT** to confirm your selection.

NOTE

- The lullaby stops when you started using **TALK** function of the parent unit to comfort your baby. It will resume in a few seconds after the broadcast is ended.

Monitor the temperature

Your baby unit monitors the temperature of your baby's room with its built-in temperature sensor. If the detected temperature is out of the preset temperature range, the parent unit will display an alert message.

Set temperature range

You can set the desired room temperature alert range. The minimum temperature can be set between **50 °F (10 °C)** and **76 °K (24 °C)**. The maximum temperature can be set between **77 °F (25 °C)** and **102 °F (39 °C)**.

- Press **MENU** when the parent unit is idle.
- Press **◄** or **►** to choose **🌡**, then press **▲**.
- Press **▼** or **▲** to choose **🌡**, then press **◄**.
- Press **▼** or **▲** to choose **🌡** or **🌡**, then press **SELECT**.
- Press **▼** or **▲** to choose the desired minimum or maximum temperature, then press **SELECT** to confirm your selection.

Temperature alert tone

You can turn on the temperature alert tone so that the parent unit will emit an alert tone if the detected temperature is out of range.

- Press **MENU** when the parent unit is idle.
- Press **◄** or **►** to choose **🌡**, then press **▲**.
- Press **▲** to choose **🔊**, then press **◄**.
- Press **▼** or **▲** to choose **🔊** or **🔊**, then press **SELECT**.

Temperature format

You can choose to display the temperature in Fahrenheit (°F) or Celsius (°C).

- Press **MENU** when the parent unit is idle.
- Press **◄** or **►** to choose **🌡**, then press **▲**.
- Press **▼** or **▲** to choose **ℹ**, then press **SELECT**.
- Press **▼** or **▲** to choose **ℹ** or **ℹ**, then press **SELECT** to confirm your selection.

Night vision

The baby unit has infrared LEDs that allow you to see your baby clearly at night or in a dark room. When the baby unit being viewed detects low light levels, the infrared LEDs are switched on automatically. The images from the baby unit are in black and white, and **👁** appears on screen.

NOTES

- It is normal if you see a short white glare on your parent unit screen as the baby unit is adapting to the dark environment.
- When the infrared LEDs are on, the images are in black and white. This is normal.

TIP

- Depending on the surroundings and other interfering factors, like lightings, objects, colors and backgrounds, the display resolution may vary. Adjust the baby unit's angle or place the baby unit at a higher level to prevent glare and blurry display.

Mount the baby unit (optional)

Your baby monitor comes ready for tabletop use. You can also choose to mount your baby monitor on the wall. See **Mount the baby unit (optional)** in the Quick Start Guide for the wall mounting instructions.

General product care

To keep this product working well and looking good, follow these guidelines:

- Avoid putting it near heating appliances and devices that generate electrical noise (for example, motors or fluorescent lamps).
- DO NOT expose it to direct sunlight or moisture.
- Avoid dropping the product or treating it roughly.
- Clean with a soft cloth.
- DO NOT immerse the parent unit and the baby unit in water and do not clean them under the tap.
- DO NOT use cleaning spray or liquid cleaners.
- Make sure the baby unit and parent unit are dry before you connect them to the mains again.

Storage

When you are not going to use the baby monitor for some time, remove the rechargeable battery from the parent unit. Store the parent unit, the baby unit and the adapters in a cool and dry place.

Frequently asked questions

Below are the questions most frequently asked about the baby monitor. If you cannot find the answer to your question, visit our website at **www.vtechphones.com**, or contact **1 (800) 595-9511** for customer service.

Why does the baby monitor produce a high-pitched noise?	Try the following (in the order listed) for common cause: <ol style="list-style-type: none">Disconnect the power to the baby units and the parent unit. Remove the batteries in the parent unit. Then install the batteries again. Wait a few seconds before connecting power back to the baby units and the parent unit. Turn on the baby units and the parent unit. Wait for the parent unit to synchronize with the baby units. Allow up to one minute for this to take place.
Why does the parent unit beep?	The baby units may be out of range. Move the parent unit closer to the baby units (but not less than 3 feet). <p>If the parent unit is powered by the provided battery, it may not have enough charge for the parent unit to perform normally. Charge the battery in the parent unit for up to 11 hours.</p> <p>The temperature of your baby's room may be too high or too low.</p>
Why doesn't I hear a sound/Why can't I hear my baby cry?	The parent unit also picks up other sounds than those of your baby. Adjust the sensitivity level to a lower level or lower the parent unit speaker volume. <p>The parent unit speaker volume may be too low or off. Press VOL+ to increase the volume.</p> <p>You may have set a low sound sensitivity level. See Adjust the sound sensitivity of the baby unit to set to a higher level.</p>
Why can't I establish a connection? Why is the connection lost every now and then? Why are there sound interruptions?	The baby units may be out of range. Move the parent unit closer to the baby units (but not less than 3 feet). <p>Other electronic products may cause interference with your baby monitor. Try installing your baby monitor as far away from these electronic devices as possible.</p>
Why doesn't my parent unit charge while connected to AC power?	Make sure the power is not controlled by a wall switch. <p>Make sure the battery is installed.</p> <p>You may have used the battery for a long time. Replace a new battery.</p>
Why is my screen in black and white?	The screen is in black and white during night-time or in a dark room when the night vision feature is activated. This is normal.
Why do I get glare or blurry display on my screen when viewing my baby at night?	During night-time or in a dark room, the surroundings and other interfering factors, like lightings, objects, colors and backgrounds may affect the image quality on your parent unit screen. Adjust the baby unit's angle or place the baby unit at a higher level to prevent glare and blurry display.

Why does the baby monitor produce a high-pitched noise?	The parent unit and baby units may be too close to each other. <ul style="list-style-type: none">Move the parent unit away from the baby units until the noise stops. OR Turn down the volume of your parent unit.
---	--

Important safety instructions

When using your equipment, basic safety precautions should always be followed to reduce the risk of fire, electric shock and injury, including the following:

- Follow all warnings and instructions marked on the product.
- Adult setup is required.
- This product is intended as an aid. It is not a substitute for responsible and proper adult supervision and should not be used as such.
- This product is not intended for use as a medical monitor.
- Do not use this product near water. For example, do not use it next to a bath tub, wash bowl, kitchen sink, laundry tub or swimming pool, or in a wet basement or shower.
- CAUTION:** Use only the batteries indicated in this manual. There may be a risk of explosion if a wrong type of battery is used for the parent unit. Use only the supplied rechargeable battery or replace the battery pack (BT207695) for the parent unit. Do not dispose of batteries in a fire. They may explode. Dispose of used battery according to the information in The RBRC® seal.
- Use only the adapters included with this product. Incorrect adapter polarity or voltage can seriously damage the product. Baby unit power adapter: Output: 5V DC 800mA Parent unit power adapter: Output: 6V DC 500mA
- The power adapters are intended to be correctly oriented in a vertical or floor mount position. The prongs are not designed to hold the plug in place if it is plugged into a ceiling, under-the-table or cabinet outlet.
- For pluggable equipment, the socket-outlet shall be installed near the equipment and shall be easily accessible.
- Unplug this product from the wall outlet before cleaning. Do not use liquid or aerosol cleaners. Use a damp cloth for cleaning.
- Unplug the power cords before replacing batteries.
- Do not cut off the power adapters to replace them with other plugs, as this causes a hazardous situation.
- Do not allow anything to rest on the power cords. Do not install this product where the cords may be walked on or crimped.
- This product should be operated only from the type of power source indicated on the marking label. If you are not sure of the type of power supply in your home, consult your dealer or local power company.
- Do not overload wall outlets or use an extension cord.
- Do not place this product on an unstable table, shelf, stand or other unstable surfaces.

17. This device may not be placed in any area where proper ventilation is not provided. Slots and openings in the back or bottom of this product are provided for ventilation. To protect them from overheating, these openings must not be blocked by placing the product on a soft surface such as a bed, sofa or rug. This product should never be placed near or over a radiator or heat register.
18. Never push objects of any kind into this product through the slots because they may touch dangerous voltage points or create a short circuit. Never spill liquid of any kind on the product.
19. To reduce the risk of electric shock, do not disassemble this product, but take it to an authorized service facility. Opening or removing parts of the product other than specified access doors may expose you to dangerous voltages or other risks. Incorrect reassembling can cause electric shock when the product is subsequently used.
20. You should test the sound reception every time you turn on the units or move one of the components.
21. Periodically examine all components for damage.
22. Be aware of possible loss of privacy while using public airwaves. Conversations may be picked up by other nursery monitors, cordless phones, scanners, etc.
23. Children should be supervised to ensure that they do not play with the product.
24. The product is not intended for use by persons (including children) with reduced physical, sensory or mental capabilities, or lack of experience and knowledge, unless they have been given supervision or instruction concerning use of the appliance by a person responsible for their safety.

SAVE THESE INSTRUCTIONS

Cautions

1. Use and store the product at a temperature between 32°F and 104°F.
2. Do not expose the product to extreme cold, heat or direct sunlight. Do not put the product close to a heating source.
3. Batteries should not be exposed to excessive heat such as bright sunshine or fire.
4. **⚠Warning**—Strangulation Hazard—Children have STRANGLED in cords. Keep this cord out of the reach of children (more than 3 ft (0.9 m) away). Do not remove this tag.
5. Never place the baby unit(s) inside the baby's crib or playpen. Never cover the baby unit(s) or parent unit with anything such as a towel or a blanket.
6. Other electronic products may cause interference with your baby monitor. Try installing your baby monitor as far away from these electronic devices as possible: wireless routers, radios, cellular telephones, intercoms, room monitors, televisions, personal computers, kitchen appliances and cordless telephones.

Precautions for users of implanted cardiac pacemakers

Cardiac pacemakers (applies only to digital cordless devices):

Wireless Technology Research, LLC (WTR), an independent research entity, led a multidisciplinary evaluation of the interference between portable wireless devices and implanted cardiac pacemakers. Supported by the U.S. Food and Drug Administration, WTR recommends to physicians that:

Pacemaker patients

- Should keep wireless devices at least six inches from the pacemaker.
- Should NOT place wireless devices directly over the pacemaker, such as in a breast pocket, when it is turned ON.

WTR's evaluation did not identify any risk to bystanders with pacemakers from other persons using wireless devices.

Electromagnetic fields (EMF)

This VTech product complies with all standards regarding electromagnetic fields (EMF). If handled properly and according to the instructions in this user's manual, the product is safe to be used based on scientific evidence available today.

The RBRC® seal

The RBRC® seal on the Ni-MH battery indicates that VTech Communications, Inc. is voluntarily participating in an industry program to collect and recycle these batteries at the end of their useful lives, when taken out of service within the United States and Canada. The RBRC® program provides a convenient alternative to placing used Ni-MH batteries into the trash or municipal waste, which may be illegal in your area.

VTech's participation in RBRC® makes it easy for you to drop off the spent battery at local retailers participating in the RBRC® program or at authorized VTech product service centers. Please call **1 (800) 8 BATTERY®** for information on Ni-MH battery recycling and disposal bans/restrictions in your area. VTech's involvement in this program is part of its commitment to protecting our environment and conserving natural resources.

RBRC® and 1 (800) 8 BATTERY® are registered trademarks of the Rechargeable Battery Recycling Corporation.

(1) this device may not cause harmful interference, and (2) this device must accept any interference received, including interference that may cause undesired operation.

To ensure safety of users, the FCC has established criteria for the amount of radio frequency energy that can be safely absorbed by a user or bystander according to the intended usage of the product. This product has been tested and found to comply with the FCC criteria. The baby unit shall be installed and used such that parts of all persons' body are maintained at a distance of approximately 8 in (20 cm) or more. The transmitter and antenna of the parent unit shall be held at least 1 ft (2.5 cm) from your face.

This Class B digital apparatus complies with Canadian requirement: CAN ICES-3 (B)/NMB-3(B)

Industry Canada

This device complies with Industry Canada licence-exempt RSS standard(s).

Operation is subject to the following two conditions: (1) this device may not cause harmful interference, and (2) this device must accept any interference, including interference that may cause undesired operation. The term "IC:" before the certification/registration number only signifies that the Industry Canada technical specifications were met. This product meets the applicable Industry Canada technical specifications.

RF radiation exposure statement
The baby unit complies with FCC RF radiation exposure limits set forth for an uncontrolled environment. The baby unit should be installed and operated with a minimum distance of 8 in (20 cm) between the baby unit and all persons' body. Use of other accessories may not ensure compliance with FCC RF exposure guidelines. This transmitter must not be co-located or operating in conjunction with any other antenna or transmitter. This equipment complies also with Industry Canada RSS-102 with respect to Canada's Health Code 6 for Exposure of Humans to RF Fields.

California Energy Commission battery charging testing mode

This baby monitor meets the California Energy Commission (CEC) regulations for energy consumption. Your baby monitor is safe to comply with the energy-conserving standards right out of the box.

Follow the instructions to install and charge the battery. The CEC battery charging testing mode is activated while charging.

Even if the parent unit is paired to baby units, the CEC battery charging testing mode is activated while it is powered off and charging.

This device complies with Part 15 of the FCC rules. Operation is subject to the following two conditions:

For C-UL compliance only

Mesures de sécurité importantes

Lorsque vous utilisez votre appareil, vous devriez toujours suivre certaines mesures de précaution de base afin de réduire les risques d'incendie, d'électrocution et de blessures corporelles, dont ceux qui suivent :

1. Observez toutes les instructions et mises en garde inscrites sur l'appareil.
2. L'installation par un adulte est requise.
3. Ce produit a été conçu pour être un dispositif d'appoint seulement. Il n'est pas le remplacement d'une supervision responsable et adéquate par un adulte et ne devrait pas être utilisé comme tel.
4. Ce produit n'est pas conçu pour être utilisé en tant que moniteur médical.
5. N'utilisez pas cet appareil près de l'eau ni de toute autre source d'humidité, par exemple, près d'une baignoire, cuve à lessive, évier de cuisine, dans un sous-sol humide ni près d'une piscine, dans un soussol humide ou une douche.
6. **MISE EN GARDE:** Il peut y avoir un risque d'explosion si vous utilisez le mauvais type de piles pour l'unité du parent. N'utilisez que le bloc-piles rechargeable inclus ou le bloc-piles de rechange (BT207695). N'incinérerez pas les piles. Celles-ci risqueraient d'exploser. Jetez les piles usées selon les renseignements suivant **le sceau du RBRC®**.
7. N'utilisez que les adaptateurs inclus avec ce produit. L'utilisation d'un adaptateur dont la polarité ou la tension serait inadéquate risque d'endommager sérieusement le produit et mettre votre sécurité en péril. Adaptateur de l'unité du bébé : Sortie : 5V CC 800mA Adaptateur de l'unité du parent : Sortie : 6V CC 500mA
8. Lorsqu'ils sont branchés dans une prise de courant, les adaptateurs secteur ont été conçus pour être orientés correctement, soit à la verticale ou au plancher. Les broches n'ont pas été conçues pour supporter le poids du bloc d'alimentation et le maintenir en place si celui-ci est branché dans une prise au plafond, sous une table ou dans un meuble.
9. Pour les PRODUITS À BRANCHER À UNE PRISE DE COURANT, la prise de courant doit être installée près du produit, afin d'assurer une accessibilité sécuritaire à la prise de courant.
10. Débranchez ce produit de la prise de courant avant de procéder au nettoyage. N'utilisez pas de nettoyants en aérosols. Utilisez un chiffon humide pour le nettoyage.
11. Débranchez les cordons d'alimentation avant de remplacer le bloc-piles.
12. Ne coupez pas les cordons d'alimentation pour remplacer les fiches, car ceci peut présenter un danger potentiel.

Mises en garde

1. Utilisez et entreposez le produit à une température entre 0 °C (32°F) et 40°C (104 °F).
2. N'exposez pas cet appareil à des froids ou des chaleurs extrêmes, ainsi qu'à la lumière directe du soleil. Ne l'installez pas près d'une source de chauffage.
3. Le bloc-piles ne doit pas être exposé à la chaleur excessive telle que la lumière du soleil ou au feu.
4. Assurez-vous que le moniteur et le cordon de l'adaptateur sont toujours hors de portée des enfants, au moins 1 mètre (3 pieds) de l'enfant ou du berceau, pour éviter tout risque de strangulation.
5. Ne jamais placer le moniteur à l'intérieur du berceau ou du parc de bébé. Ne jamais couvrir le moniteur ou l'unité (s) portative avec un article tel une serviette ou une couverture.
6. D'autres équipements électroniques peuvent produire des interférences sur votre moniteur vidéo et audio. Tentez d'installer votre moniteur vidéo ou audio à l'écart des appareils électroniques tels que des routeurs sans fil, radios, téléphones cellulaires, interphones, moniteurs, téléphones, ordinateurs personnels, électroménagers et téléphones sans fil.
7. N'enfoncez jamais d'objets à travers les ouvertures de cet appareil, car ils pourraient entrer en contact avec des points de tension dangereux ou causer des courts-circuits qui peuvent dégénérer en incendies ou en risques d'électrocution. Ne renversez jamais de liquide dans ce produit.
8. N'enfoncez jamais d'objets à travers les ouvertures de cet appareil, car ils pourraient entrer en contact avec des points de tension dangereux ou causer des courts-circuits qui peuvent dégénérer en incendies ou en risques d'électrocution. Ne renversez jamais de liquide dans ce produit.
9. Afin de réduire les risques d'électrocution, ne démontez pas cet appareil, mais apportez-le dans un centre de service autorisé. L'ouverture du boîtier ou le retrait de toutes pièces que contient cet appareil, à l'exception de l'accès autorisé à certains capteurs ou ouvertures, risque de vous exposer à des points de tension dangereux ou d'autres dangers. Un remontage incorrect peut par la suite présenter des risques d'électrocution.
10. Vous devriez tester la réception chaque fois que vous mettez l'appareil en fonction.
11. Examinez les composantes afin de vérifier si celles-ci ne sont pas endommagées.
12. Soyez avisé de la perte de la confidentialité lorsque vous utilisez les ondes publiques. Les conversations peuvent être entendues par d'autres moniteurs de bébé, des téléphones sans fil, des scanners, etc.
13. Les enfants devraient être supervisés afin de vous assurer qu'ils ne jouent pas avec l'appareil.
14. Le produit n'est pas conçu pour être utilisé par des personnes (incluant des enfants) aux capacités physiques, sensorielles ou mentales réduites ou qui manquent d'expérience et de connaissances, à moins qu'on leur ait donné suffisamment de supervision ou d'instructions relativement à l'utilisation de l'appareil par une personne responsable de leur sécurité.

CONSERVEZ CES INSTRUCTIONS

Limited warranty

What does this limited warranty cover?

The manufacturer of this VTech Product warrants to the holder of a valid proof of purchase ("Consumer" or "you") that the Product and all accessories provided in the Sales package ("Products") are free from defects in material and workmanship, pursuant to the following terms and conditions, when installed and used normally and in accordance with the Product operating instructions. This limited warranty extends only to the Consumer for Products purchased and used in the United States of America and Canada.

What will VTech do if the Product is not free from defects in materials and workmanship during the limited warranty period ("Materially Defective Product")?

During the limited warranty period, VTech's authorized service representative will repair or replace at VTech's option, without charge, a Materially Defective Product. If we repair the Product, we may use new or refurbished replacement parts. If we choose to replace the Product, we may replace it with a new or refurbished Product of the same or similar design. We will retain defective parts, modules, or equipment.

Repair or replacement of the Product, at VTech's option, is your exclusive remedy. VTech will return the repaired or replacement Products to you in working condition. You should expect the repair or replacement to take approximately 30 days.

How long is the limited warranty period?

The limited warranty period for the Product extends for ONE (1) YEAR from the date of purchase. If VTech repairs or replaces a Materially Defective Product under the terms of this limited warranty, this limited warranty also applies to the repaired or replacement Product for a period of either (a) 90 days from the date the repaired or replacement Product is shipped to you or (b) the time remaining on the original one-year warranty; whichever is longer.

What is not covered by this limited warranty?

This limited warranty does not cover:

1. Product that has been subjected to misuse, accident, shipping or other physical damage, improper installation, abnormal operation or handling, neglect, inundation, fire, water or other liquid intrusion; or
2. Product that has been damaged due to repair, alteration or modification by anyone other than an authorized service representative of VTech; or
3. Product to the extent that the problem experienced is caused by signal conditions, network reliability, or cable or antenna systems; or
4. Product to the extent that the problem is caused by use with non-VTech accessories; or

5. Product whose warranty/quality stickers, product serial number plates or electronic serial numbers have been removed, altered or rendered illegible; or

6. Product purchased, used, serviced, or shipped for repair from outside the United States of America or Canada, or used for commercial or institutional purposes (including but not limited to Products used for rental purposes); or

7. Product returned without a valid proof of purchase (see item 2 below); or
8. Charges for installation or set up, adjustment of customer controls, and installation or repair of systems outside the unit.

How do you get warranty service?

To obtain warranty service in the USA, please visit our website at **www.vtechphones.com** or call 1 (800) 595-9511. In Canada, go to **www.vtechcanada.com** or call 1 (800) 267-7377.

NOTE: Before calling for service, please review the user's manual - a check of the Product's controls and features may save you a service call.

Except as provided by applicable law, you assume the risk of loss or damage during transit and transportation and are responsible for delivery or handling charges incurred in the transport of the Product(s) to the service location. VTech will return repaired or replaced Product under this limited warranty. Transportation, delivery or handling charges are prepaid. VTech assumes no risk for damage or loss of the Product in transit. If the Product failure is not covered by this limited warranty, or proof of purchase does not meet the terms of this limited warranty, VTech will notify you and will request that you authorize the cost of repair prior to any further repair activity. You must pay for the cost of repair and return shipping costs for the repair of Products that are not covered by this limited warranty.

What must you return with the Product to get warranty service?

1. Return the entire original package and contents including the Product to the VTech service location along with a description of the malfunction or difficulty; and
2. Include a "valid proof of purchase" (sales receipt) identifying the Product purchased (Product model) and the date of purchase or receipt; and
3. Provide your name, complete and correct mailing address, and telephone number.



Specifications are subject to change without notice. © 2018 VTech Communications, Inc. All rights reserved. 01/18, VM3261-X_CIB_V1. Document order number: 91-010873-010-100