

Go to www.vtechphones.com to register your product for enhanced warranty support and latest VTech product news.

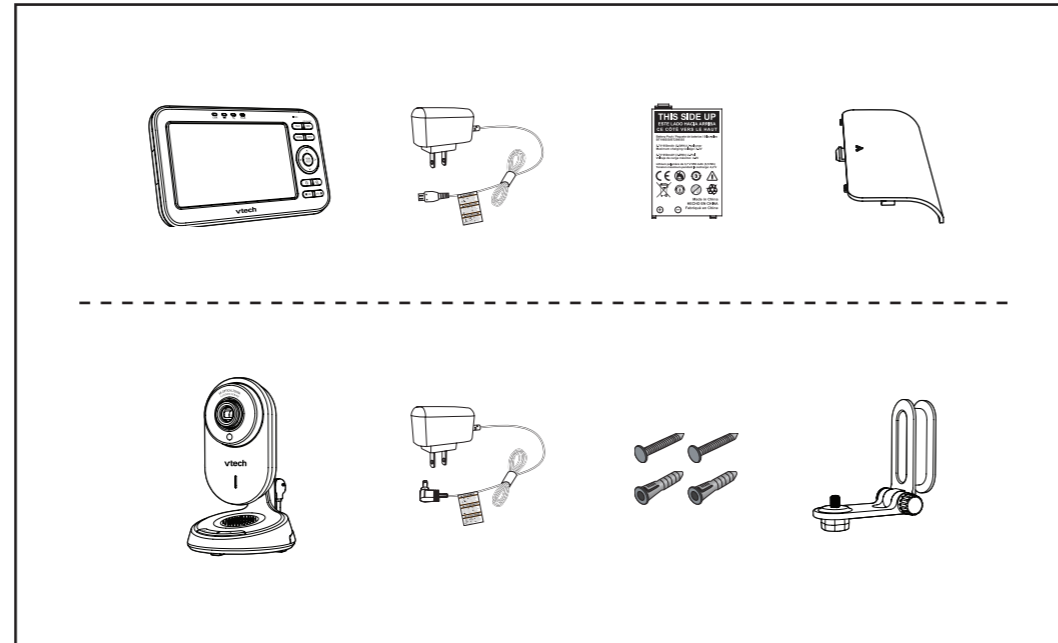
VM5271



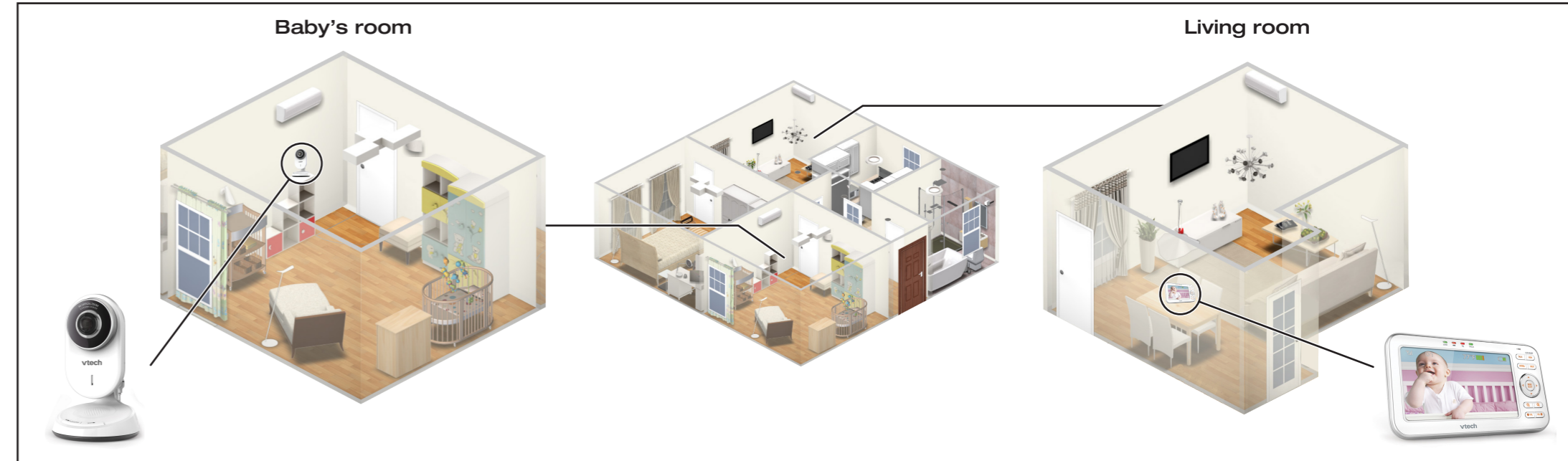
vtech

Quick start guide

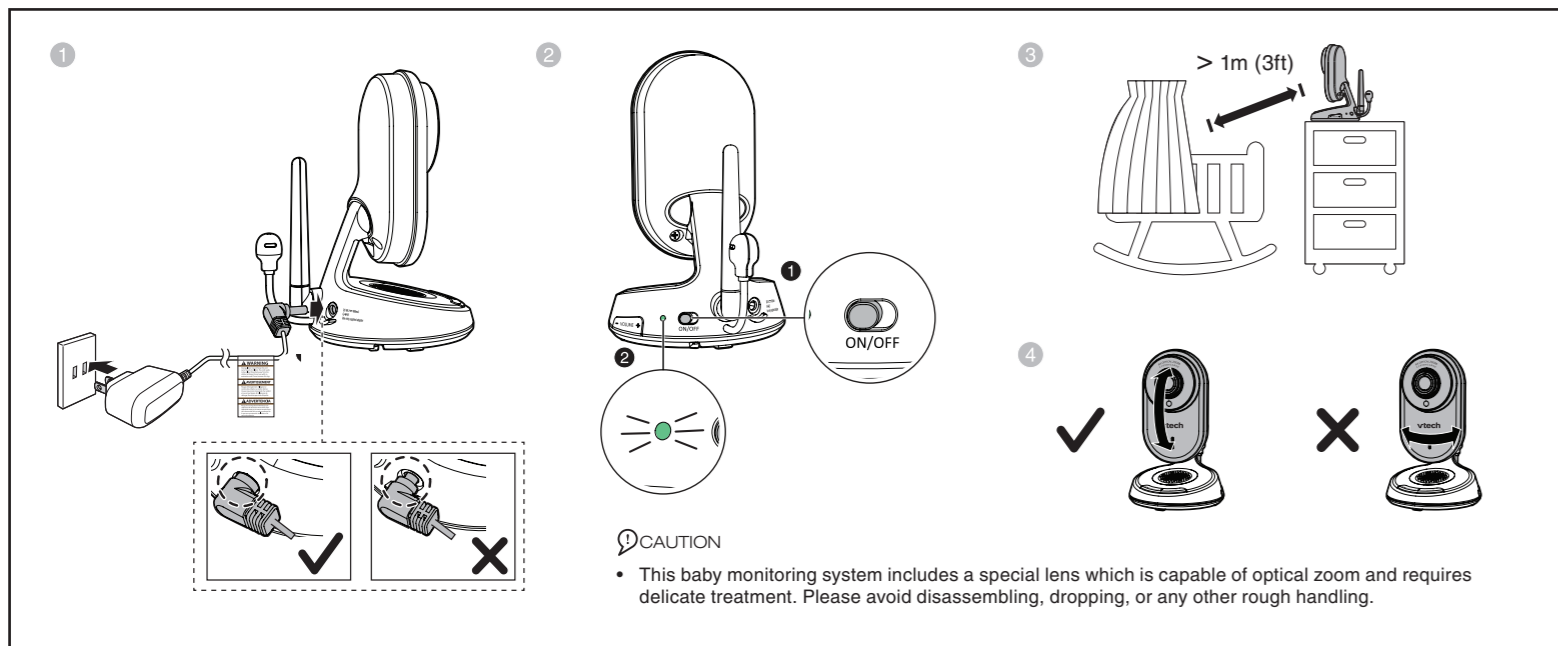
What's in the box



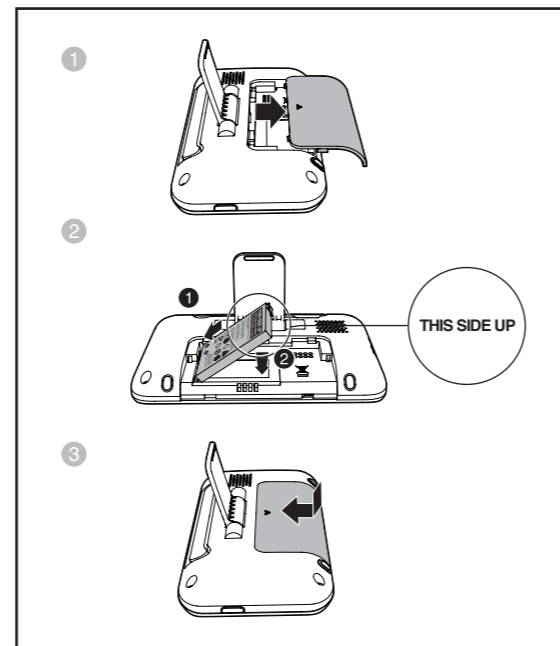
VM5271-2 baby monitor system



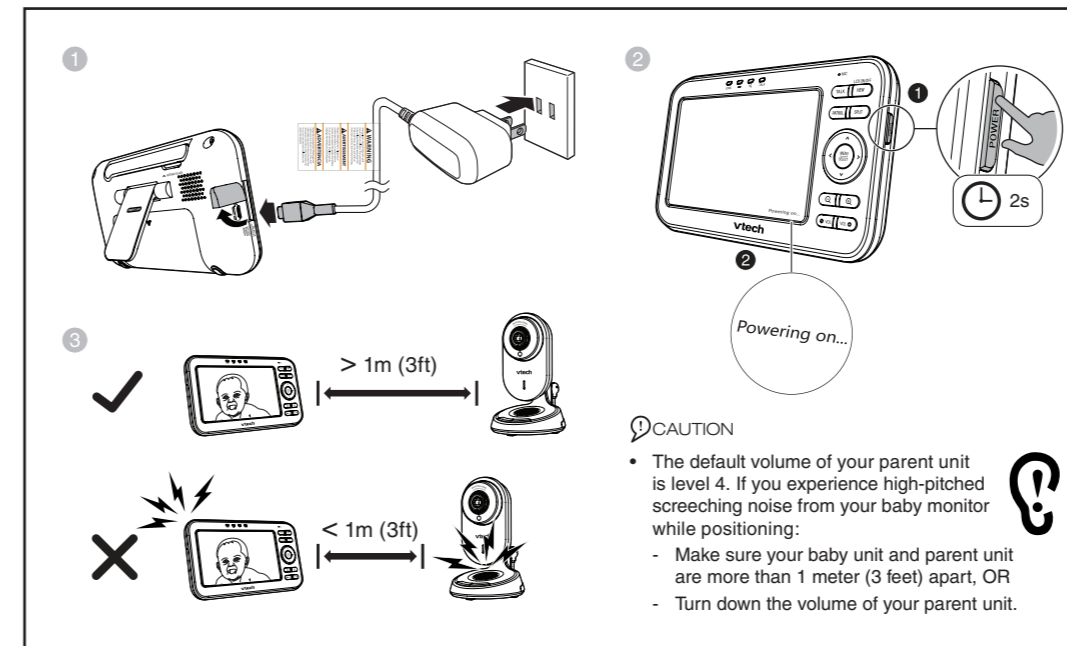
1 Connect and power on - Baby unit



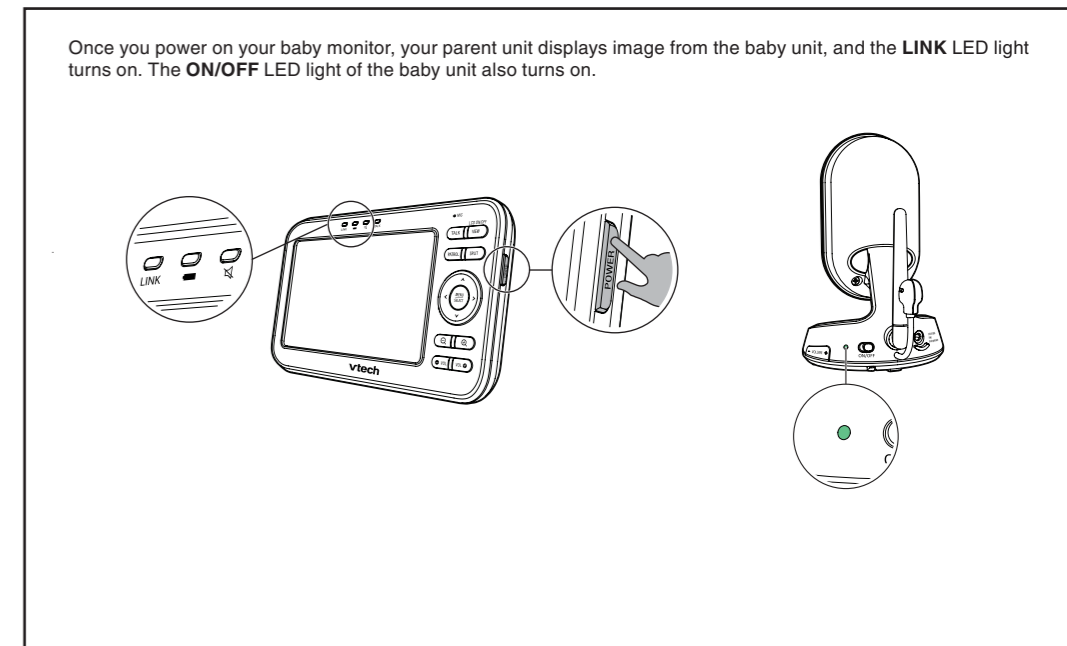
2 Install the battery



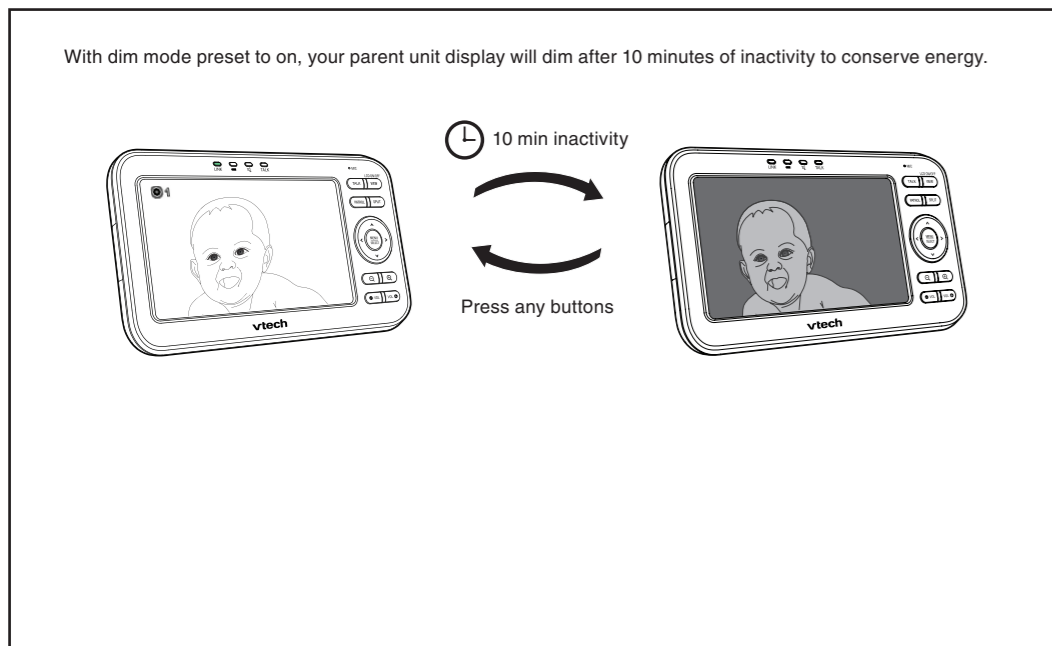
3 Connect and power on - Parent unit



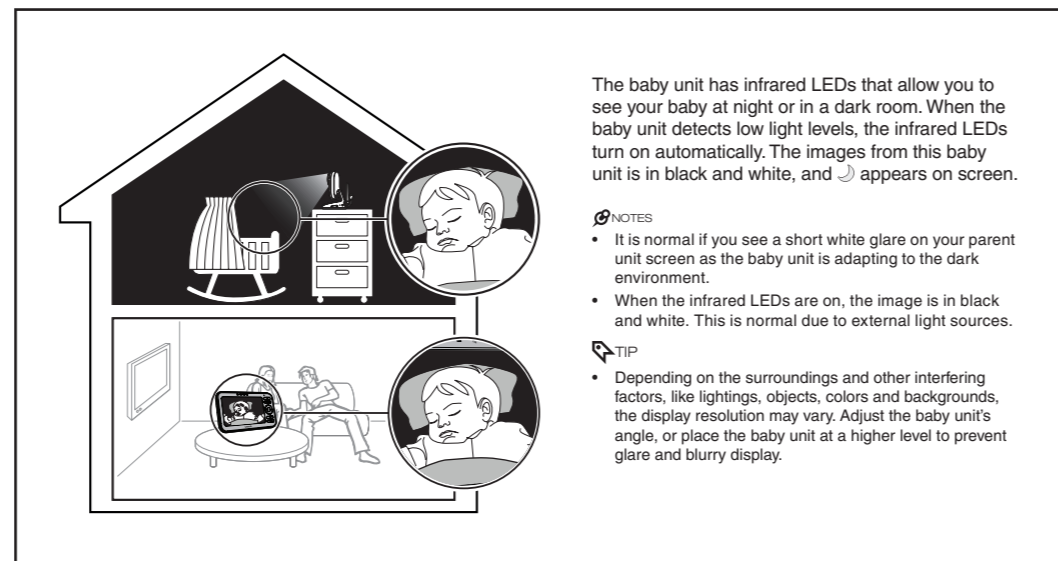
4 Status check



Dim mode



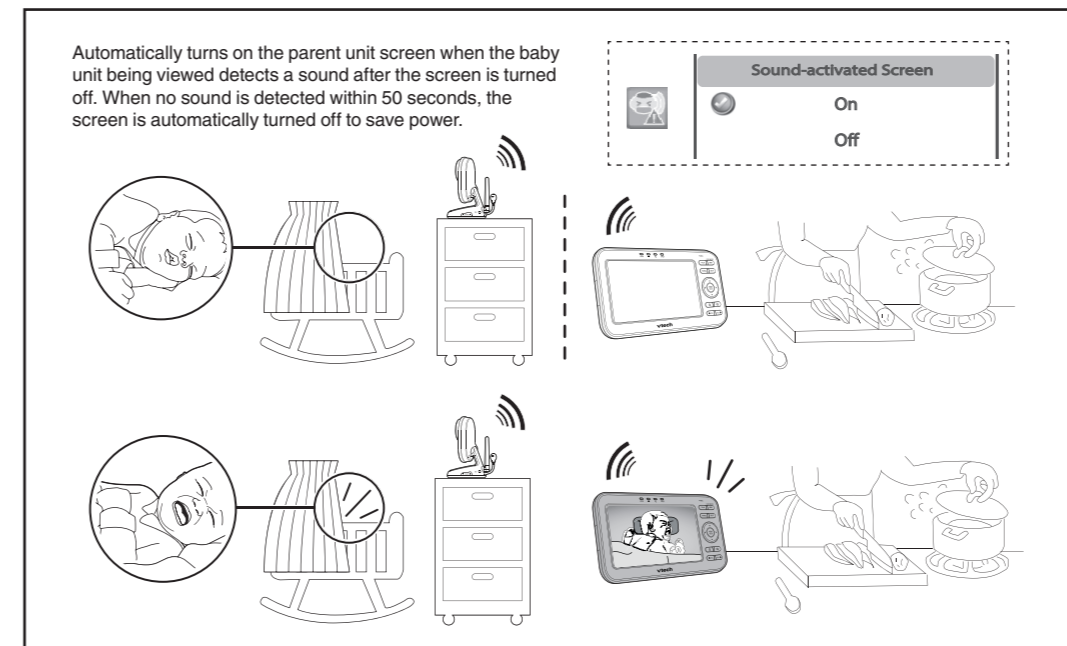
Night vision



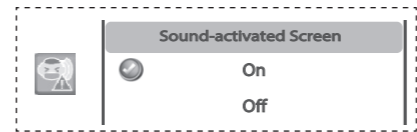
The baby unit has infrared LEDs that allow you to see your baby at night or in a dark room. When the baby unit detects low light levels, the infrared LEDs turn on automatically. The images from this baby unit is in black and white, and appears on screen.

- NOTES**
- It is normal if you see a short white glare on your parent unit screen as the baby unit is adapting to the dark environment.
 - When the infrared LEDs are on, the image is in black and white. This is normal due to external light sources.
- TIP**
- Depending on the surroundings and other interfering factors, like lightings, objects, colors and backgrounds, the display resolution may vary. Adjust the baby unit's angle, or place the baby unit at a higher level to prevent glare and blurry display.

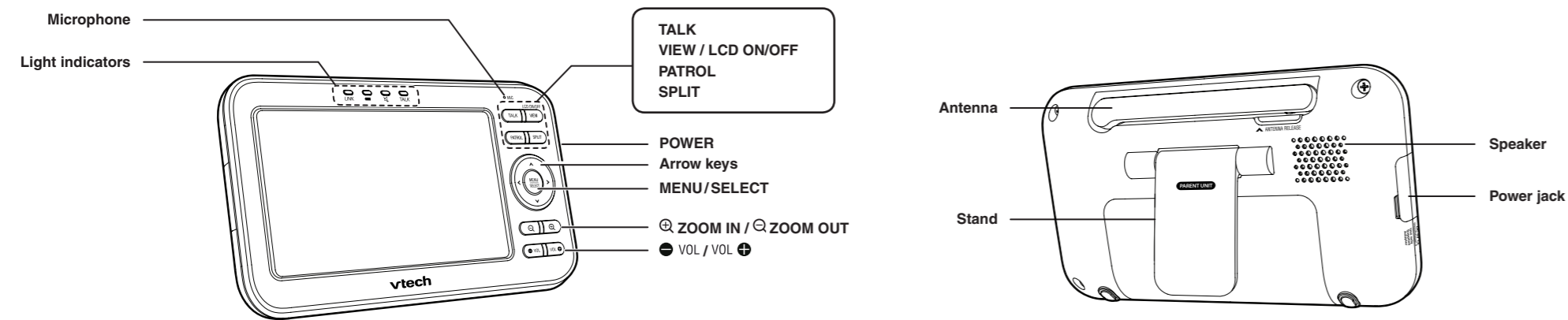
Sound activation



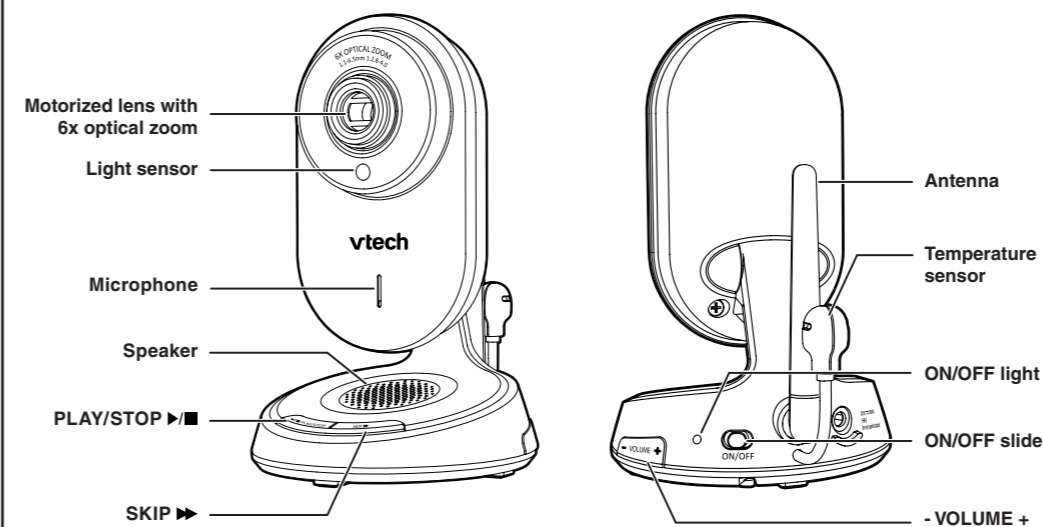
Automatically turns on the parent unit screen when the baby unit being viewed detects a sound after the screen is turned off. When no sound is detected within 50 seconds, the screen is automatically turned off to save power.



Overview - Parent unit

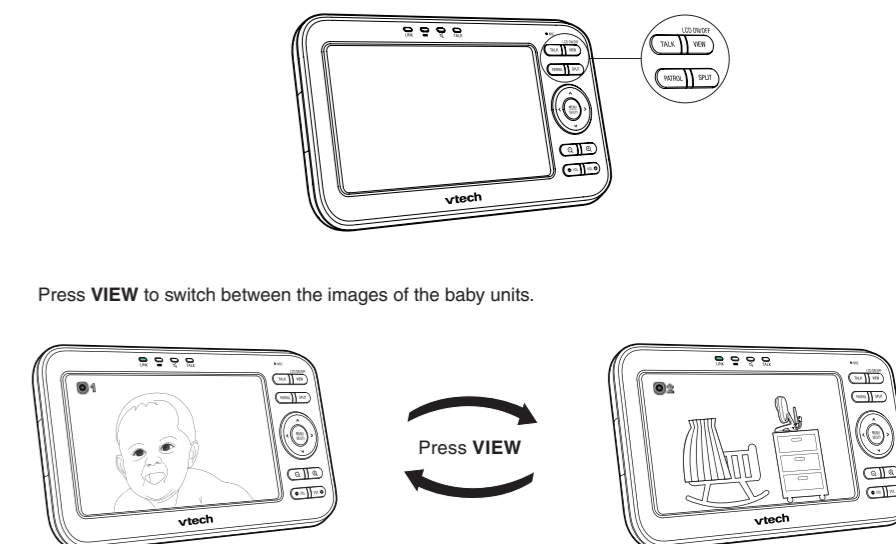


Overview - Baby unit

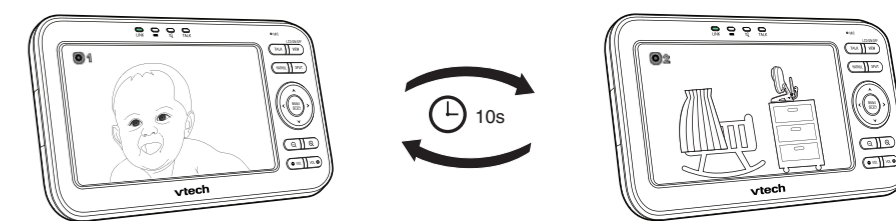


Change different views (require additional baby units - VM5231)

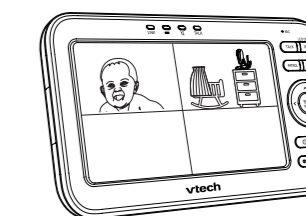
You can view from different baby units if you have more than one baby units in your system (VM5231, purchased separately).



Press **PATROL** to alternately view the image from the baby units every 10 seconds.



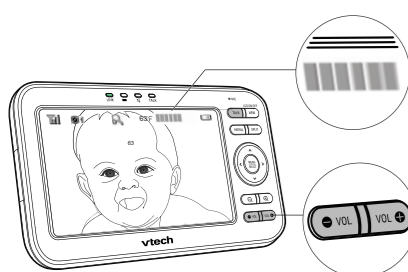
Press **SPLIT** to view the images from all baby units at once.



Basic operation - Parent unit

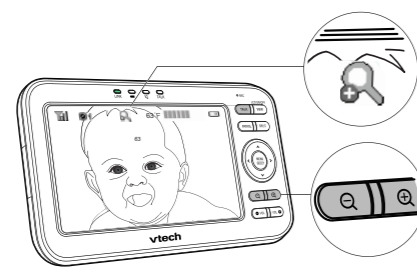
Adjust speaker volume

Press **VOL / VOL +** to adjust your parent unit speaker volume. It determines the volume of sound transmitted from your baby units.



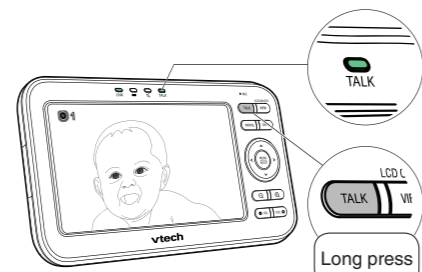
Zoom

Press **ZOOM IN** or **ZOOM OUT** to zoom in or zoom out.



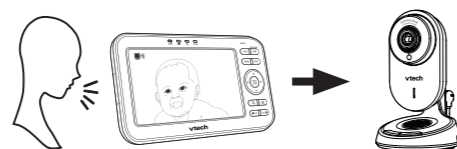
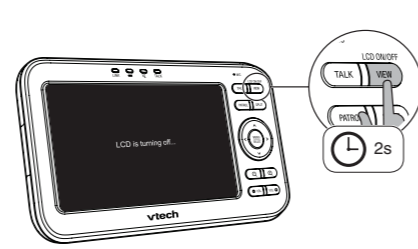
Talk to your baby unit

Press and hold **TALK** and speak to your parent unit. Your voice is transmitted to the baby unit.



Turn off the screen

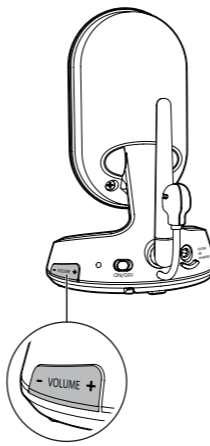
Press and hold **LCD ON/OFF** to switch off the screen. You can still hear sound from the selected baby unit.



Basic operation - Baby unit

Adjust speaker volume

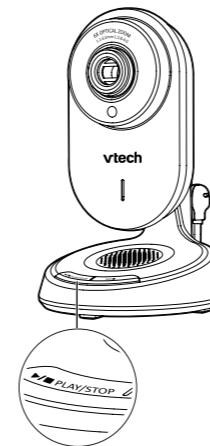
Press **- VOLUME +** to adjust your baby unit speaker volume. It determines the lullaby volume and talkback volume transmitted from your parent unit.



Lullaby

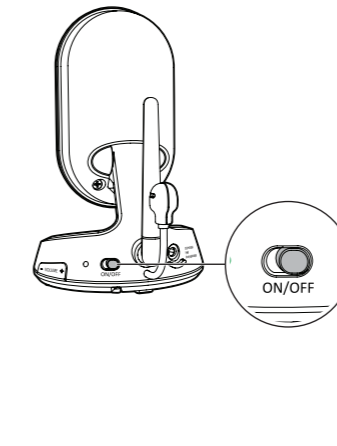
Press **PLAY/STOP** to play lullaby on the baby units.

- Press **▶** to skip to the other lullabies.
- Press **■** again to stop the lullaby.



Turn off the baby unit

Slide the **ON/OFF** switch to **OFF** to power off your baby unit.

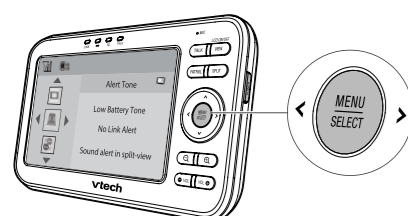


Use the menu

Press **MENU/SELECT** to enter the menu, choose a menu item, or save a setting.

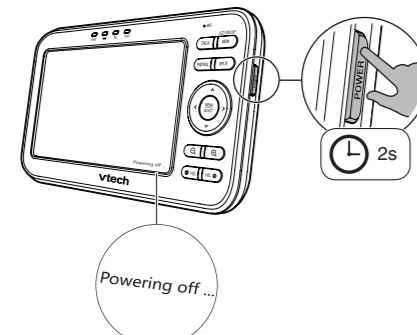
While in the menu:

- Press **▲** or **▼** to scroll up or down.
- Press **▶** to select an item.
- Press **◀** to return to the main menu or idle screen.



Turn off the parent unit

Press and hold **POWER** to power off your parent unit.



Mount the baby monitor (optional)

